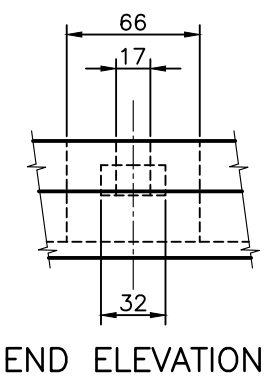
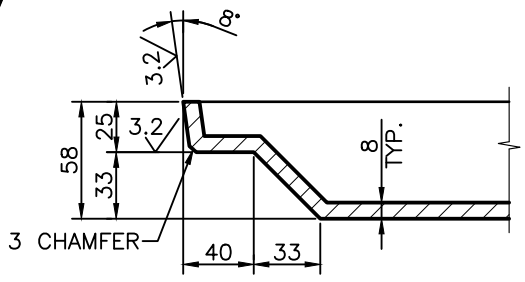


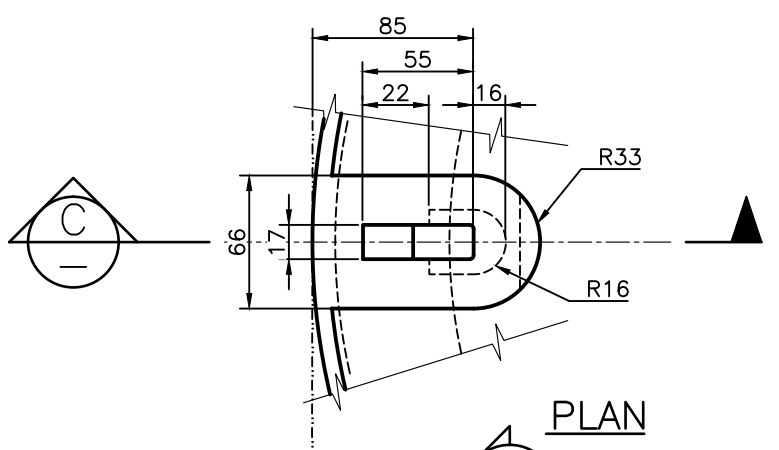
PLAN



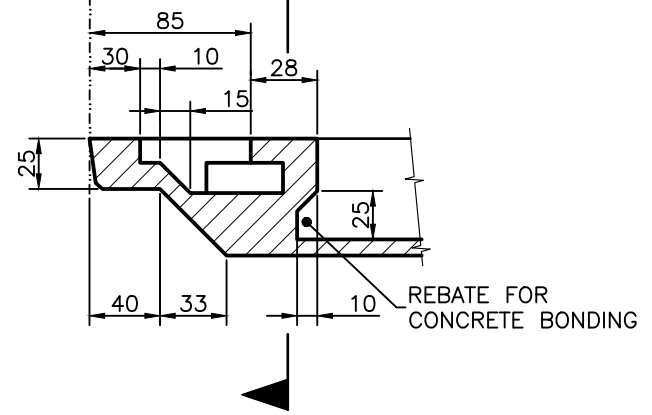
END ELEVATION



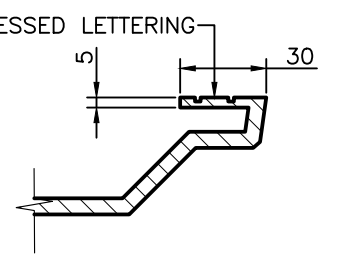
DETAIL 1
SCALE NTS



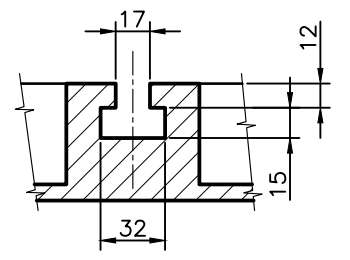
PLAN



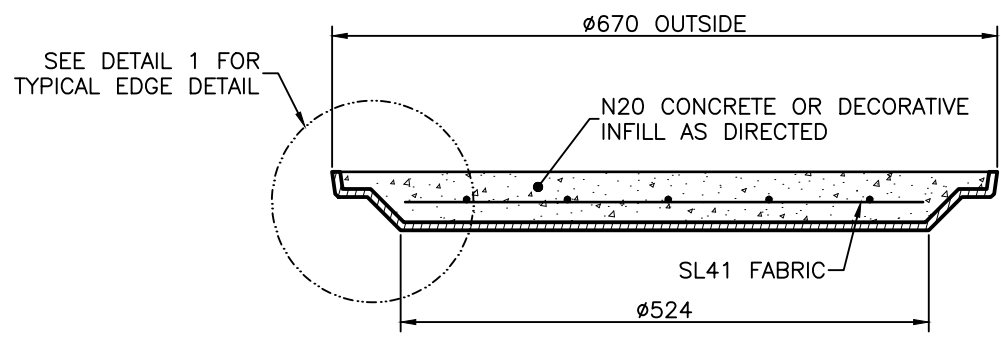
SECTION C
SCALE NTS



SECTION B
SCALE NTS



SECTION D
SCALE NTS



SECTION A
SCALE NTS

LIFTING KEYHOLE DETAILS

NOTES:

- THIS DRAWING IS FOR USE IN NON-ROADWAY APPLICATION SUBJECT TO PEDESTRIAN LOADINGS ONLY.
- ALL EDGES TO BE SQUARE.
- CASTING TO BE FREE OF BURRS AND PITS.
- MATERIAL**
DUCTILE CAST IRON
TENSILE STRENGTH: 600-3 (AS 1831)
HARDNESS: 145-185 (HB)
DESIGN LOAD = 80kN (AS 3996)
MASS = 59.5Kg
- TOLERANCES**
CAST SIZE: ±1.00mm
ANGLE PROFILE: ±0.25°
MACHINED SIZE: ±0.125mm
OVERALL DIAMETER OF COVER: +0mm-0.25mm
DRY FILM THICKNESS (DFT) OF COATING: 50µm
- MACHINE SURFACE SYMBOL: 3.2/
- ALL MACHINED SURFACES SHALL HAVE A COATING APPROVED AS FIT FOR THE PURPOSE OF PROVIDING A RUST PROOF, NON-STICK AND GAS/WATER PROOF JOINT. (HAVTEC-HS1 OR SIMILAR)
- LIDS TO BE BOLTED DOWN IF DIRECTED BY DESIGNER.
- DIMENSIONS IN MILLIMETRES (U.N.O.).

B	Note 5 Modified, Reinforcing Fabric Descrip. Amended.	DL 12/09	GM 03/10	GB 04/10
A	ORIGINAL ISSUE	April '01	May '01	June '01
ISSUE	AMENDMENT	DRAWN DATE	CHK'D DATE	APPR'D DATE

DESIGN AUTHORISED FOR ISSUE B. BALL SIGNATURE ON ORIGINAL DATED 29/6/01				DESIGN	STD DWG GROUP	DATE	April '01
MANAGER ASSET SUPPORT - R.P.E.Q: 3 8 5 2 DESIGN APPROVED				DRAWN	CITY DESIGN	DATE	April '01
B. HANSEN SIGNATURE ON ORIGINAL DATED 27/6/01				CHECKED	M. STEER	DATE	May '01
PRINCIPAL ASSET OFFICER ROADS & DRAINAGE				DRAWING FILENAME	UMS 325		
				ASSOCIATED PLANS	SUPERSEDES WS 51-10		



BRISBANE CITY COUNCIL STANDARD DRAWING

MANHOLE COVER CONCRETE INFILL (PEDESTRIAN TRAFFIC) 1050 TO 1500 DIAMETER

SCALE: NOT TO SCALE
DWG No: **UMS 329**
ORIGINAL SIZE: A3 REVISION: B