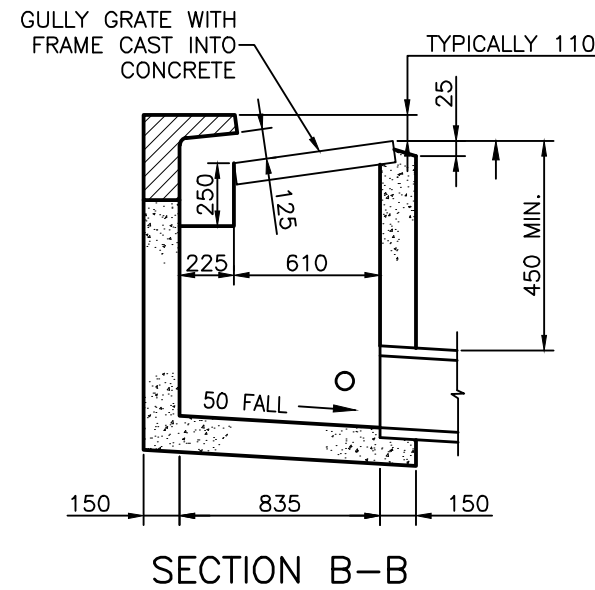


NOTE:- FOR SAG GULLY, APRON TO EXTEND TO END OF LINTEL AND GULLY TO BE LOCATED IN CENTRE OF LINTEL.

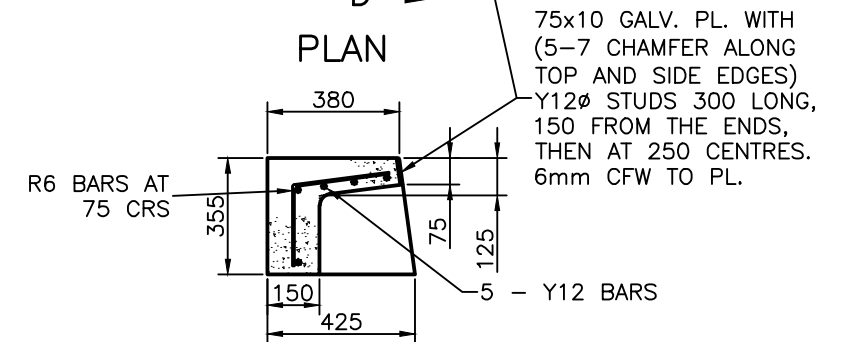
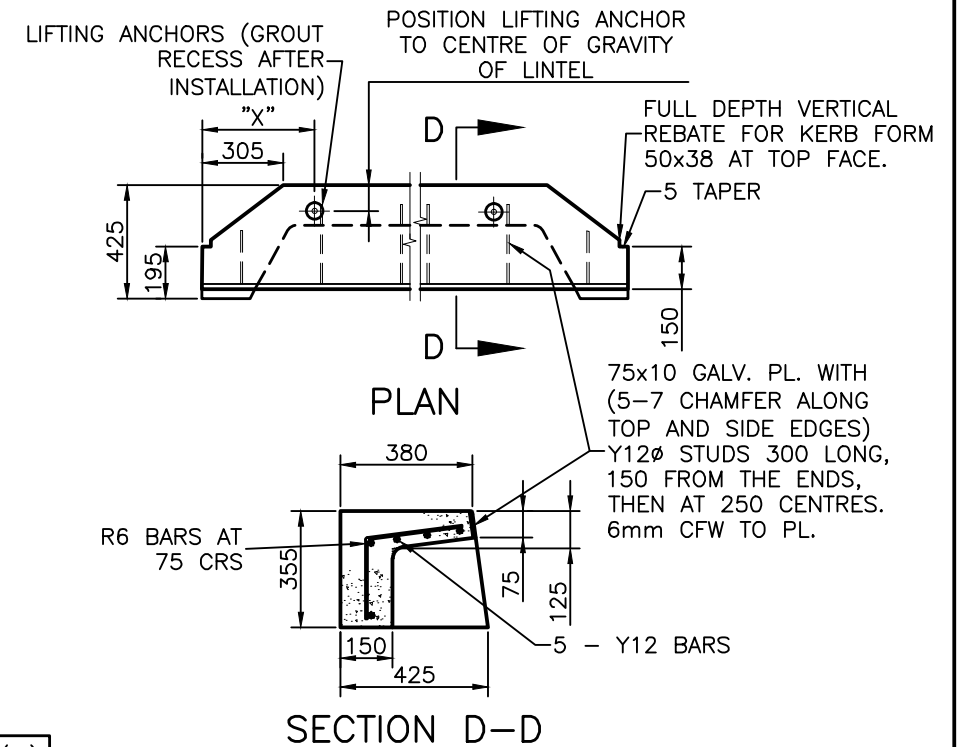
TYPICAL INLET ON GRADE



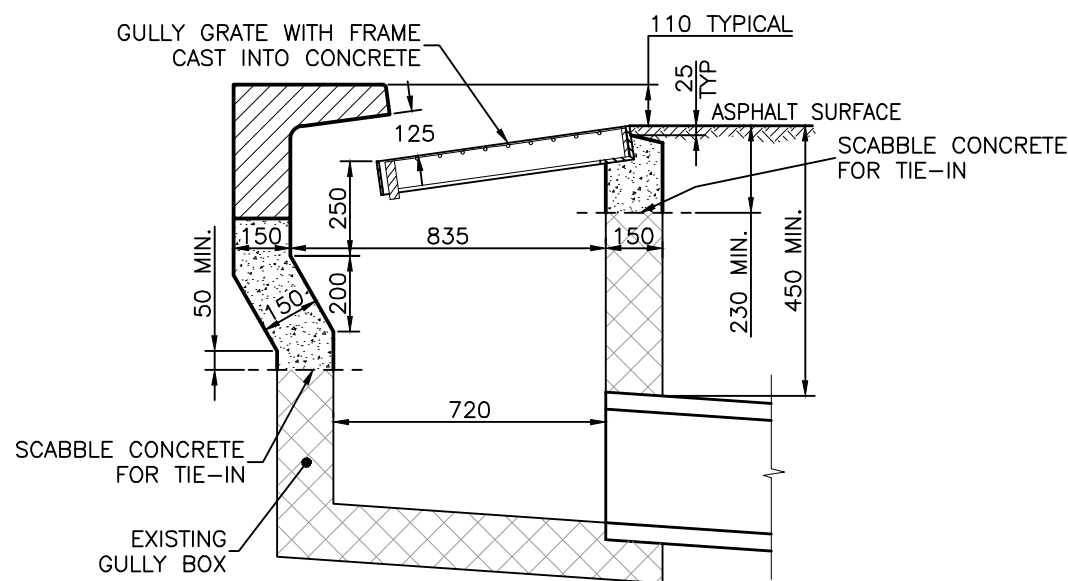
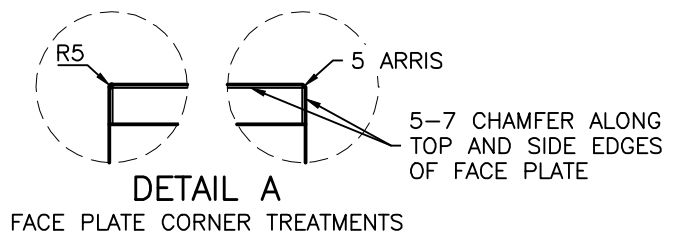
PRECAST LINTEL DETAIL
TYPICAL DIMENSIONS

| LINTEL | "A" mm | "B" mm | "C" mm | "D" mm | "X" mm | MASS (kg) |
|--------|--------|--------|--------|--------|--------|-----------|
| XS* | 1200 | 840 | 600 | 770 | 400 | 300 |
| S | 2400 | 2040 | 1800 | 1970 | 400 | 500 |
| M | 3600 | 3240 | 3000 | 3170 | 690 | 700 |
| L | 4800 | 4440 | 4200 | 4370 | 1000 | 900 |

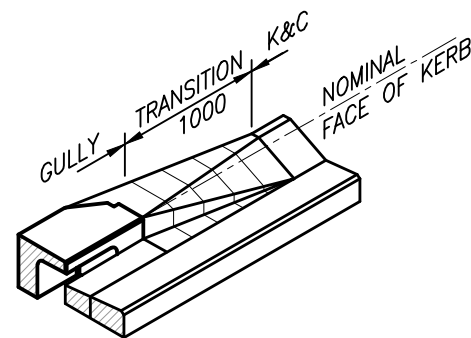
* BCC USE ONLY. SEE NOTE 7.



SECTION D-D



SECTION - GULLY RECONSTRUCTION



TRANSITION TO K&C TYPE 'D' SHOWN

NOTES:

1. PRECAST CONCRETE LINTEL TO BE GRADE N30 AND TO CONFORM TO AS 3600. ALL OTHER CONCRETE TO BE GRADE N25.
2. COVER TO ALL BARS TO BE 40 MIN.
3. REINFORCEMENT STEEL TO CONFORM TO AS 1302.
4. EACH LIFTING ANCHOR TO BE "SWIFTLIFT" OR EQUIVALENT 1.3 TONNE GALVANISED AND FITTED TO MANUFACTURERS SPECIFICATION.
5. LINTELS ARE TO BE ORDERED AS FOLLOWS:
 - 'XS' LINTEL (EXTRA SMALL)
 - 'S' LINTEL (SMALL)
 - 'M' LINTEL (MEDIUM)
 - 'L' LINTEL (LARGE)
6. UNLESS APPROVED OTHERWISE BY COUNCIL DELEGATE, LIMIT DEPTH OF GULLY TO 1.35m.
7. 'XS' (1.2m) LINTEL ONLY TO BE USED FOR 'ANTI-PONDING' APPLICATIONS AND NOT TO BE INCLUDED IN HYDRAULIC CALCULATIONS. 'XS' LINTEL FOR INTERNAL BCC USE ONLY.
8. PROVIDE 1500 TRANSITION TO TYPE 'E' (200 HIGH) KERB.
9. ALL DIMENSIONS IN MILLIMETRES (U.N.O.).

| ISSUE | AMENDMENT | DRAWN DATE | CHK'D DATE | APPR'D DATE |
|-------|---|------------|------------|-------------|
| D | 1.2m Lintel Details & Note 7 Added, Lintel and Pit Alignment/Placement Amended | DJL 12/09 | GM 03/10 | GB 04/10 |
| C | Note on Plan view of Typical Inlet on Grade Mod. | DJL 02/09 | GB 09/09 | PC 9/09 |
| B | Gully Throat Opening Reduced, Dim on Lintel Detail Elevation Modified, Chamfer to Top Edge & Corner of Face Plate Added | DJL 07/07 | BH 08/07 | BH 08/07 |
| A | ORIGINAL ISSUE | April '01 | May '01 | June '01 |

| | | | | |
|---|------------------|---------------|------------------|---------------------|
| DESIGN AUTHORIZED FOR ISSUE B. BALL SIGNATURE ON ORIGINAL DATED 29/6/01 | DESIGN | STD DWG GROUP | DATE | April '01 |
| MANAGER ASSET SUPPORT - R.P.E.Q. 3 8 5 2 DESIGN APPROVED | DRAWN | CITY DESIGN | DATE | April '01 |
| B. HANSEN SIGNATURE ON ORIGINAL DATED 27/6/01 | CHECKED | M. STEER | DATE | May '01 |
| PRINCIPAL ASSET OFFICER ROADS & DRAINAGE | DRAWING FILENAME | UMS 331 | ASSOCIATED PLANS | SUPERSEDES WS 52-1B |



BRISBANE CITY COUNCIL STANDARD DRAWING

TYPE 'A' GULLY KERB IN LINE

| | |
|------------------------|---------------|
| SCALE NOT TO SCALE | |
| DWG No. UMS 331 | |
| ORIGINAL SIZE A3 | REVISION D |