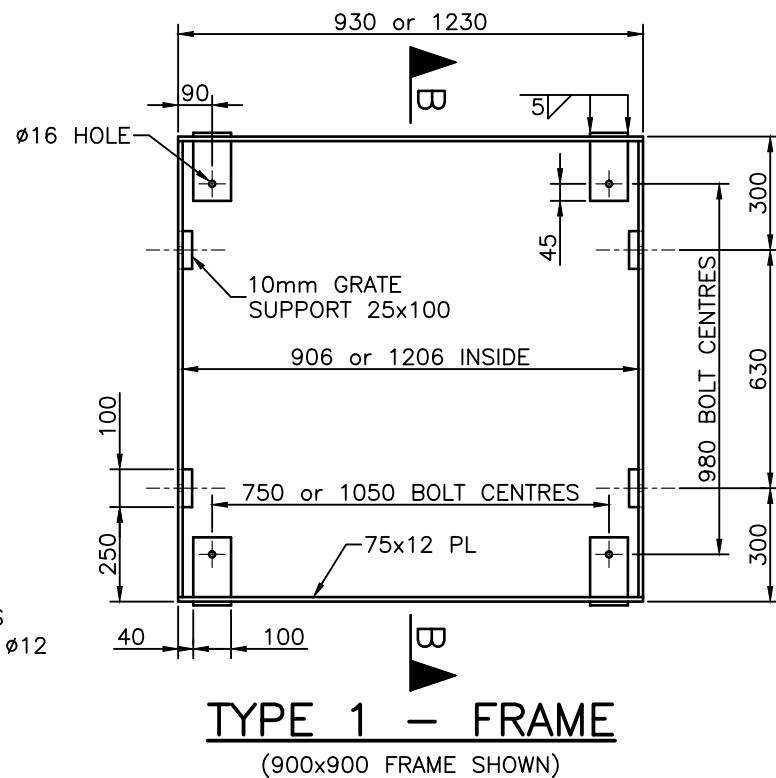
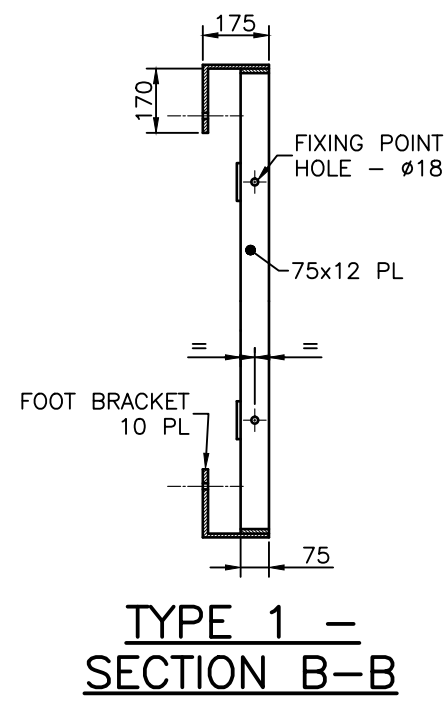


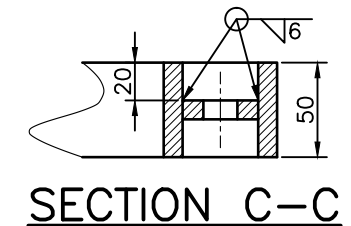
TYPE 1 - GRATE
(900x900 GRATE SHOWN)



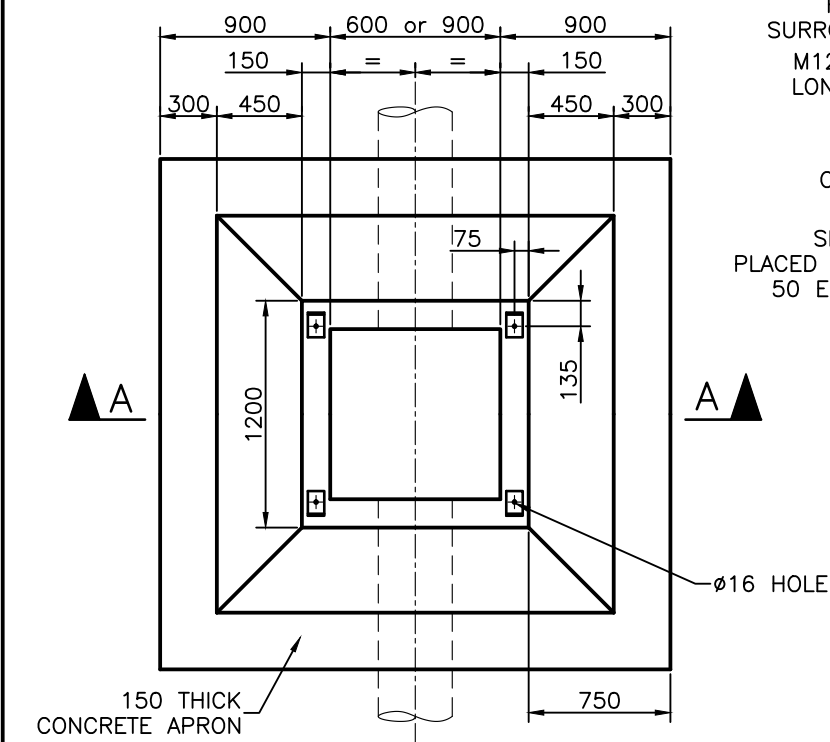
TYPE 1 - FRAME
(900x900 FRAME SHOWN)



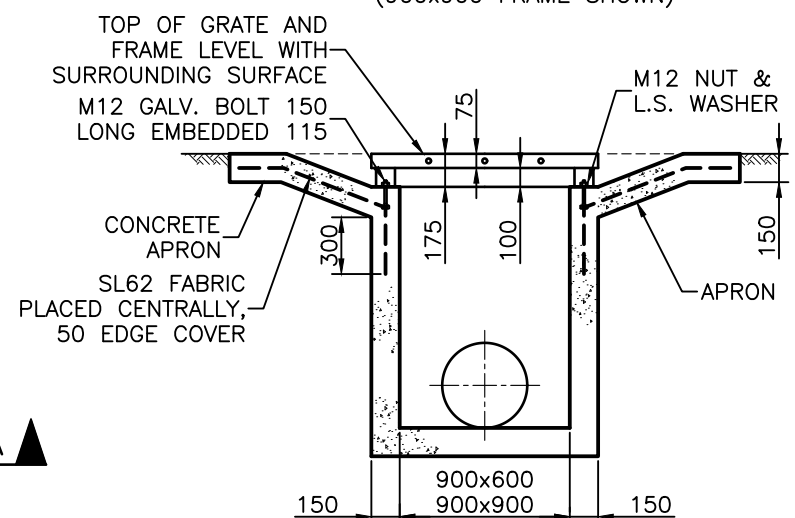
TYPE 1 - SECTION B-B



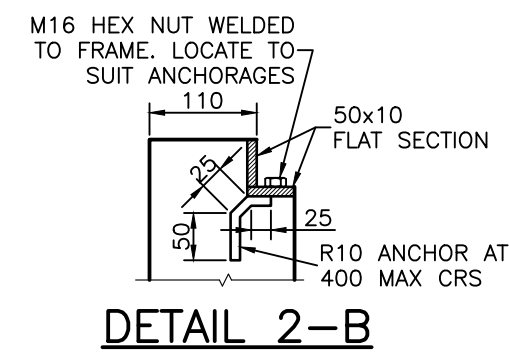
SECTION C-C



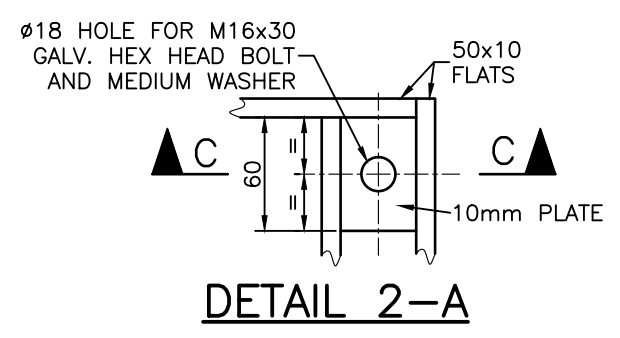
TYPE 1 - PLAN
(900x900 PIT SHOWN)
GRATE OMITTED FOR CLARITY



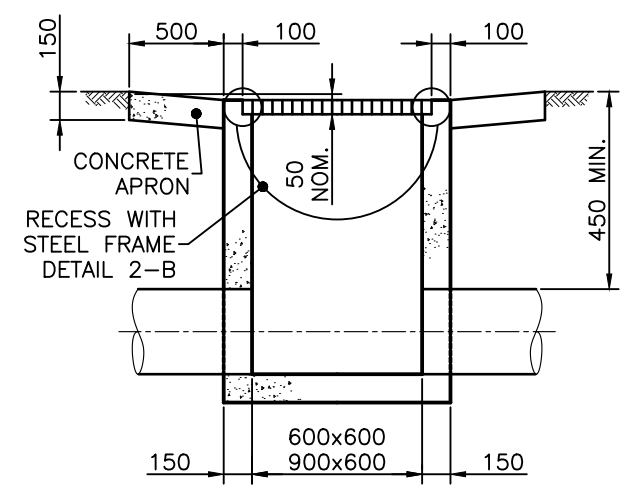
TYPE 1 - SECTION A-A



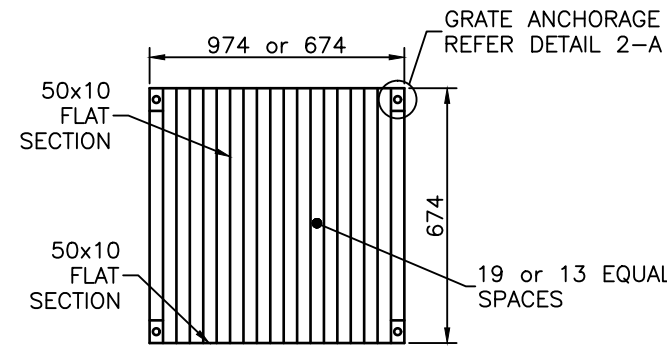
DETAIL 2-B



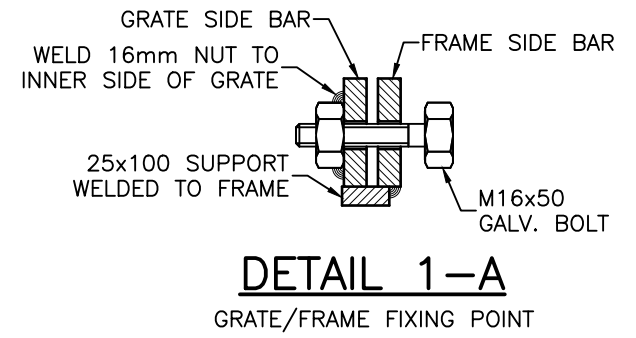
DETAIL 2-A



TYPE 2 - SECTION



TYPE 2 - GRATE



DETAIL 1-A
GRATE/FRAME FIXING POINT

NOTES:

1. ALTERNATIVELY, A MODIFIED TYPE A GULLY (WITHOUT A LINTEL) TO ACCOMMODATE A FLUSH TYPE A GRATE/FRAME MAY BE ADOPTED.
2. CONCRETE N25 IN ACCORDANCE WITH AS1379 AND AS3600.
3. ALL WELDS TO AS1554. ALL WELDING SYMBOLS TO AS1101.3.
4. GRATE AND FRAME TO BE HOT DIP GALV. AFTER FABRICATION TO AS4680.
5. REINFORCING BARS GRADE 250 TO AS1302.
6. ALL FLATS GRADE 250 TO AS3678.
7. ALL ANGLES GRADE 250 TO AS3679.
8. GRATES AND FRAMES TO COMPLY WITH AS3996 CLASS B DESIGN.
9. BOLTS, NUTS AND WASHERS TO AS1252.
10. HOT DIP GALVANISE BOLTS AND NUTS TO AS1214. HOT DIP GALVANISE WASHERS TO AS4680.
11. FOR INLETS WITH A DEPTH GREATER THAN 1.35m, STEP IRONS ARE REQUIRED. REFER UMS 321 FOR DETAILS.
12. DIMENSIONS IN MILLIMETRES (UNO).

ISSUE	AMENDMENT	DRAWN DATE	CHK'D DATE	APPR'D DATE
C	Note 11 Modified	DJL 01/10	GM 6/10	GAB 6/10
B	Drawing Re-issued (Mod. Layout), 900x600 Type 1 Inlet Added, Note 11 Added	DJL 08/09	GB 09/09	PC 9/09
A	ORIGINAL ISSUE	April '01	May '01	June '01

DESIGN AUTHORIZED FOR ISSUE B. BALL SIGNATURE ON ORIGINAL DATED 29/6/01	DESIGN	STD DWG GROUP	DATE	April '01
MANAGER ASSET SUPPORT - R.P.E.Q. 3 8 5 2 DESIGN APPROVED	DRAWN	CITY DESIGN	DATE	April '01
B. HANSEN SIGNATURE ON ORIGINAL DATED 27/6/01	CHECKED	M. STEER	DATE	May '01
PRINCIPAL ASSET OFFICER ROADS & DRAINAGE	DRAWING FILENAME	UMS 337		
	ASSOCIATED PLANS			



BRISBANE CITY COUNCIL STANDARD DRAWING

**FIELD INLETS
TYPE 1 AND TYPE 2**

SCALE: NOT TO SCALE
DWG No. **UMS 337**
ORIGINAL SIZE: A3
REVISION: C