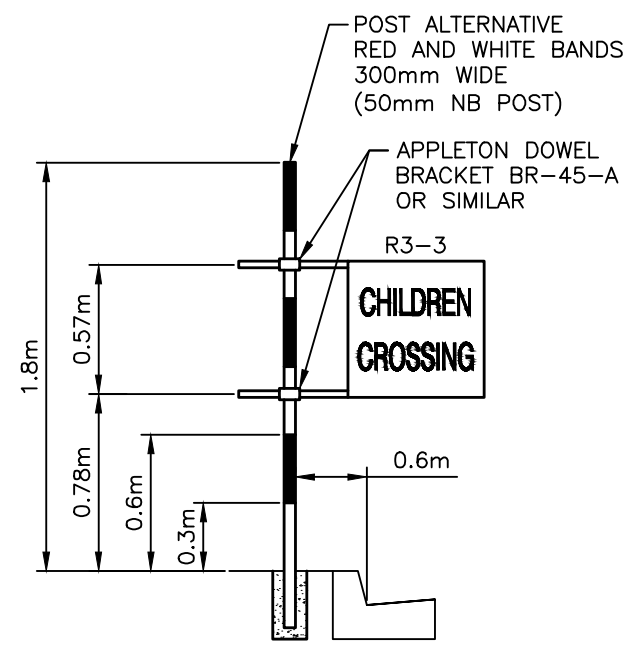
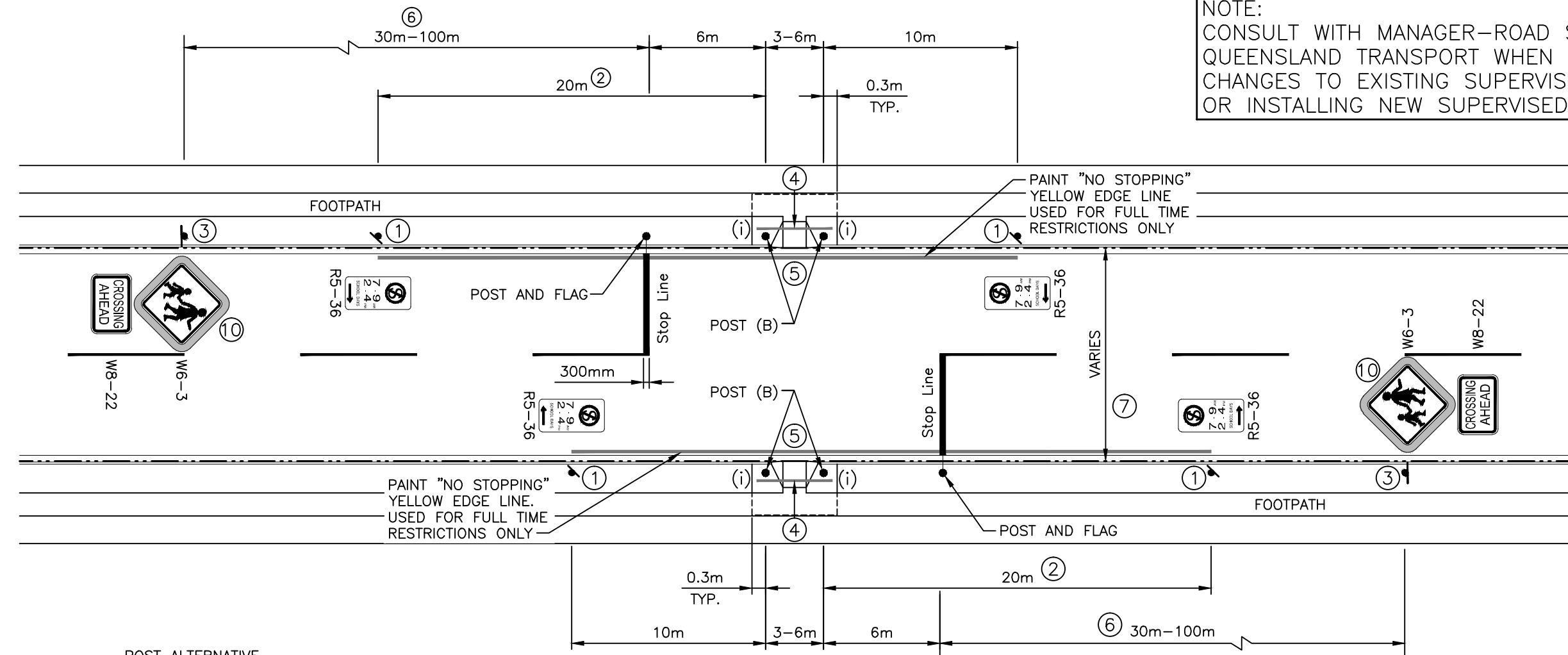
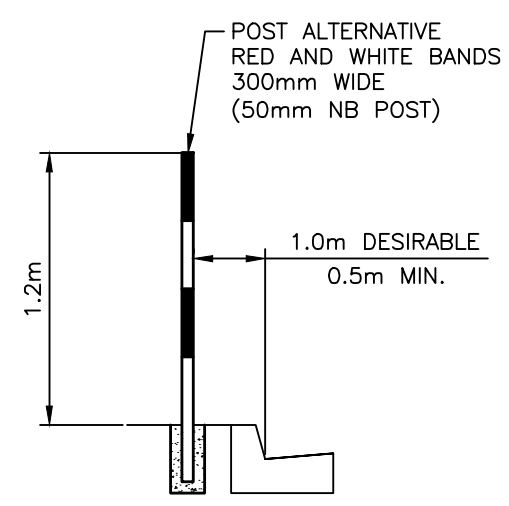


NOTE:
CONSULT WITH MANAGER—ROAD SAFETY,
QUEENSLAND TRANSPORT WHEN PROPOSING
CHANGES TO EXISTING SUPERVISED CROSSINGS
OR INSTALLING NEW SUPERVISED CROSSINGS.



POST AND FLAG



POST (B)

NOTES:

1. TIMES OF OPERATION MAY BE SPECIFIED BY USE OF SIGN R5-36 (SEE CLAUSE 10.1.10 – M.U.T.C.D.) IF REQUIRED.
2. WHERE STATIONARY VEHICLES NEAR A CROSSING SERIOUSLY LIMIT VISIBILITY BETWEEN DRIVERS AND PEDESTRIANS, AN INCREASE IN THESE DISTANCES MAY BE REQUIRED.
3. ADVANCE SIGNS MAY BE SUPPLEMENTED WITH ADVANCE PAVEMENT MESSAGES (SEE CLAUSE 11.5 – M.U.T.C.D.).
4. A LINE (APPROXIMATELY 100mm WIDE AND PAINTED YELLOW) TO BE PAINTED ON THE FOOTPATH 1m BEHIND THE FACE OF THE KERB (THIS MAY BE REDUCED TO 0.5m MIN. WHERE FOOTPATH WIDTH AND VISIBILITY ARE LIMITED) – TO INDICATE THE POSITION WHERE PEDESTRIANS SHOULD WAIT UNTIL DIRECTED TO CROSS THE CARRIAGEWAY, OR IF UNSUPERVISED A SUITABLE GAP IN TRAFFIC OCCURS IN WHICH TO SAFELY CROSS THE TRAFFIC. THIS LINE EXTENDS THE WIDTH OF THE SEALED APRON CONNECTING THE FOOTPATH AND THE KERB OR A DISTANCE OF 3-6m I.E. BETWEEN THE CROSSING POSTS (WITHOUT FLAGS).
5. KERB RAMPS SHOULD BE INSTALLED WITH CONCRETE PADS ON EACH SIDE OF RAMP (AS INDICATED (i)) IF NO FOOTPATH, INSTALL CONCRETE APRON BEHIND KERB RAMP.
6. THE CHILDREN SIGN (W6-3) WITH CROSSING AHEAD SIGN (W8-22) SHOULD BE LOCATED 80-100m IN ADVANCE OF THE CROSSING. THIS DISTANCE MAY BE REDUCED TO 30m MINIMUM IN LOW SPEED ENVIRONMENTS.
7. FOR CARRIAGEWAYS 10.8m WIDE AND OVER, INTEGRATED OR NON-INTEGRATED KERB BUILD-OUTS ARE DESIRABLE – REFER UMS 992.
8. FOR DESIGN NOTES, CONSTRUCTION NOTES AND LEGEND REFER TO UMS 901.
9. ALL CONCRETE TO BE GRADE N25 AND BROOM FINISHED FOR SLIP RESISTANCE REQUIREMENTS.
10. ALL 'W6-3' SIGNS ARE TO BE FITTED WITH FLUORO ORANGE TARGET BOARDS.

ISSUE	AMENDMENT	DRAWN DATE	CHK'D DATE	APPR'D DATE
D	COMPLIANCE WITH M.U.T.C.D.	Jan '11	Feb '11	Feb '11
C	DIMENSIONS CORRECTED	Jul '08	Jul '08	Jul '08
B	NOTE 8 ADDED	May '07	May '07	May '07
A	ORIGINAL ISSUE	May '06	June '06	Aug '06

DESIGN AUTHORISED FOR ISSUE			
P COTTON SIGNATURE ON ORIGINAL DATED 06/09/06			
MANAGER CITY ASSETS, R.P.E.Q: 2 5 4 6			
DESIGN APPROVED			
V NASH SIGNATURE ON ORIGINAL			
SENIOR PROGRAM OFFICER – ROAD NETWORK			
DESIGN	STANDARDS WORKING GROUP	DATE	May '06
DRAWN	CITY DESIGN	DATE	May '06
CHECKED	D Maher	DATE	June '06
DRAWING FILENAME	UMS 991		
ASSOCIATED PLANS			



BRISBANE CITY COUNCIL STANDARD DRAWING	
ROAD NETWORK GUIDELINES	
CHILDREN'S CROSSING	
SUPERVISED	
SCALE	NOT TO SCALE
DWG No.	UMS 991
ORIGINAL SIZE	A3
REVISION	D