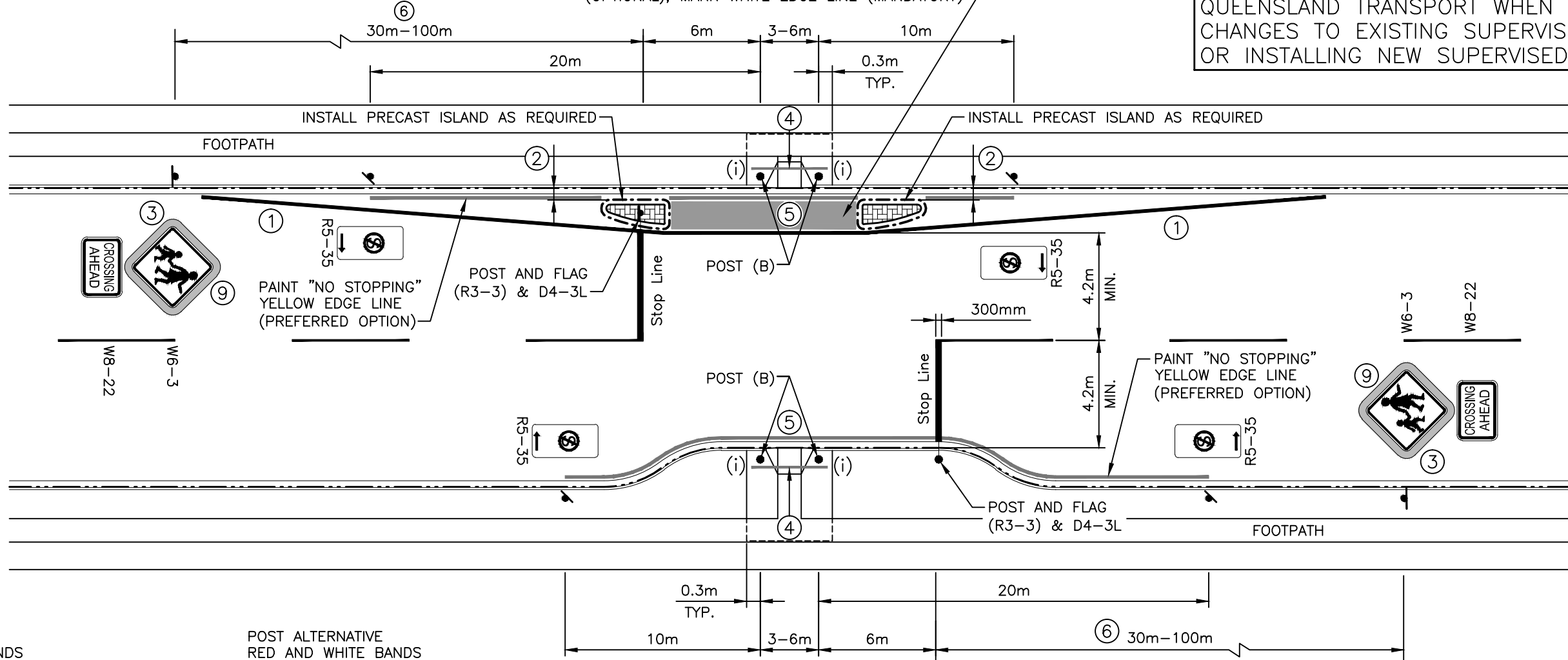
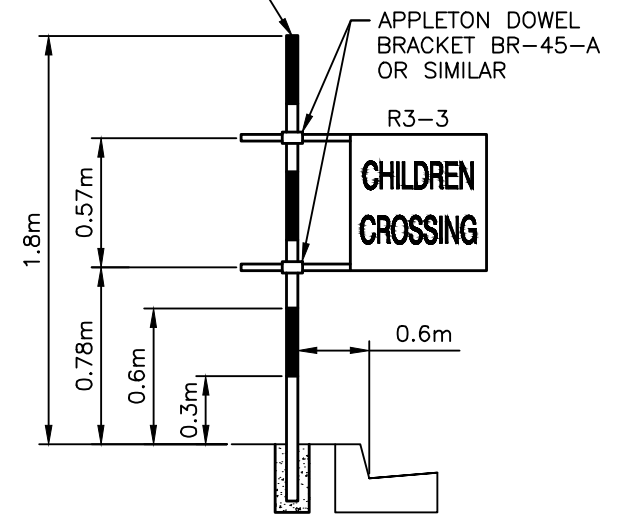


MARK TYPE 1 NON-SLIP SIGNAL RED PAVEMENT TREATMENT IN GAP BETWEEN BUILD-OUTS (OPTIONAL), MARK WHITE EDGE LINE (MANDATORY)

NOTE:
CONSULT WITH MANAGER-ROAD SAFETY, QUEENSLAND TRANSPORT WHEN PROPOSING CHANGES TO EXISTING SUPERVISED CROSSINGS OR INSTALLING NEW SUPERVISED CROSSINGS.

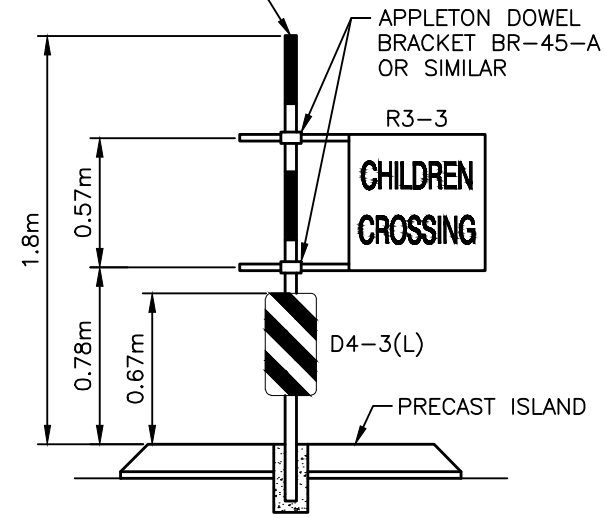


POST ALTERNATIVE RED AND WHITE BANDS 300mm WIDE (50mm NB POST)

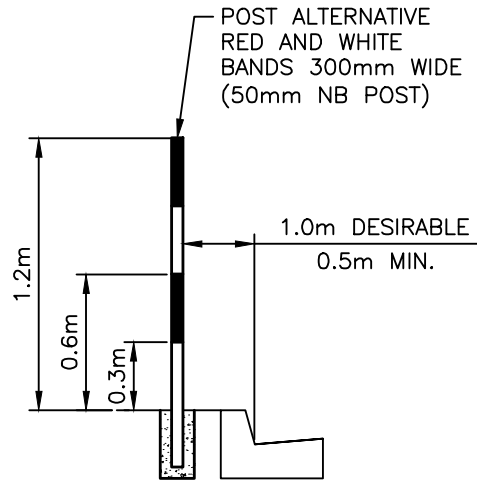


POST AND FLAG
(INTEGRATED KERB BUILD-OUT)

POST ALTERNATIVE RED AND WHITE BANDS 300mm WIDE (50mm NB POST)



POST AND FLAG
(NON-INTEGRATED KERB BUILD-OUT)



POST (B)

NOTES:

1. WHITE EDGELINES PAINTED AS SHOWN WITH A 1 IN 15 TAPER.
2. LONGITUDINAL DRAINAGE GAP 600mm DESIRABLE (450mm MINIMUM). DESIGNER TO CONSIDER EFFECTS OF LOCALISED ROADWAY FLOODING ON ADJACENT PROPERTIES.
3. ADVANCE SIGNS MAY BE SUPPLEMENTED WITH ADVANCE PAVEMENT MESSAGES (SEE CLAUSE 11.5 - M.U.T.C.D.).
4. A LINE (APPROXIMATELY 100mm WIDE AND PAINTED YELLOW) TO BE PAINTED ON THE FOOTPATH 1m BEHIND THE FACE OF THE KERB (THIS MAY BE REDUCED TO 0.5m MIN. WHERE FOOTPATH WIDTH AND VISIBILITY ARE LIMITED) - TO INDICATE THE POSITION WHERE PEDESTRIANS SHOULD WAIT UNTIL DIRECTED TO CROSS THE CARRIAGEWAY, OR IF UNSUPERVISED A SUITABLE GAP IN TRAFFIC OCCURS IN WHICH TO SAFELY CROSS THE TRAFFIC. THIS LINE EXTENDS THE WIDTH OF THE SEALED APRON CONNECTING THE FOOTPATH AND THE KERB OR A DISTANCE OF 3-6m I.E. BETWEEN THE CROSSING POSTS (WITHOUT FLAGS).
5. KERB RAMPS SHOULD BE INSTALLED WITH CONCRETE PADS ON EACH SIDE OF RAMP (AS INDICATED (i)) IF NO FOOTPATH, INSTALL CONCRETE APRON BEHIND KERB RAMP.
6. THE CHILDREN SIGN (W6-3) WITH CROSSING AHEAD SIGN (W8-22) SHOULD BE LOCATED 80-100m IN ADVANCE OF THE CROSSING. THIS DISTANCE MAY BE REDUCED TO 30m (MIN.) IN LOW SPEED ENVIRONMENTS.
7. FOR DESIGN NOTES, CONSTRUCTION NOTES AND LEGEND REFER TO UMS 901.
8. ALL CONCRETE TO BE GRADE N25 AND BROOM FINISHED FOR SLIP RESISTANCE REQUIREMENTS.
9. ALL 'W6-3' SIGNS ARE TO BE FITTED WITH FLUORO ORANGE TARGET BOARDS.

ISSUE	AMENDMENT	DRAWN DATE	CHK'D DATE	APPR'D DATE
D	NEW ISSUE - ORIGINAL UMS 992 NOW UMS 993	Jan '11	Feb '11	Feb '11
C	Flag Mounting Altered to R3-1 Posts to M.U.T.C.D. Req.	DJL 08/09	IC 09/09	PC 09/09
B	NOTE 11 ADDED	May '07	May '07	May '07
A	ORIGINAL ISSUE	May '06	June '06	Aug '06

DESIGN AUTHORIZED FOR ISSUE	DESIGN	STANDARDS WORKING GROUP	DATE	May '06
P COTTON SIGNATURE ON ORIGINAL DATED 06/09/06	DRAWN	CITY DESIGN	DATE	May '06
MANAGER CITY ASSETS, R.P.E.O. 2 5 4 6	CHECKED	D Maher	DATE	June '06
DESIGN APPROVED	DRAWING FILENAME	UMS 992		
V NASH SIGNATURE ON ORIGINAL	ASSOCIATED PLANS			
SENIOR PROGRAM OFFICER - ROAD NETWORK				



BRISBANE CITY COUNCIL STANDARD DRAWING

ROAD NETWORK GUIDELINES

CHILDREN'S CROSSING

SUPERVISED - WITH INTEGRATED OR NON-INTEGRATED KERB BUILD-OUTS

SCALE	NOT TO SCALE
DWG No.	UMS 992
ORIGINAL SIZE	A3
REVISION	D