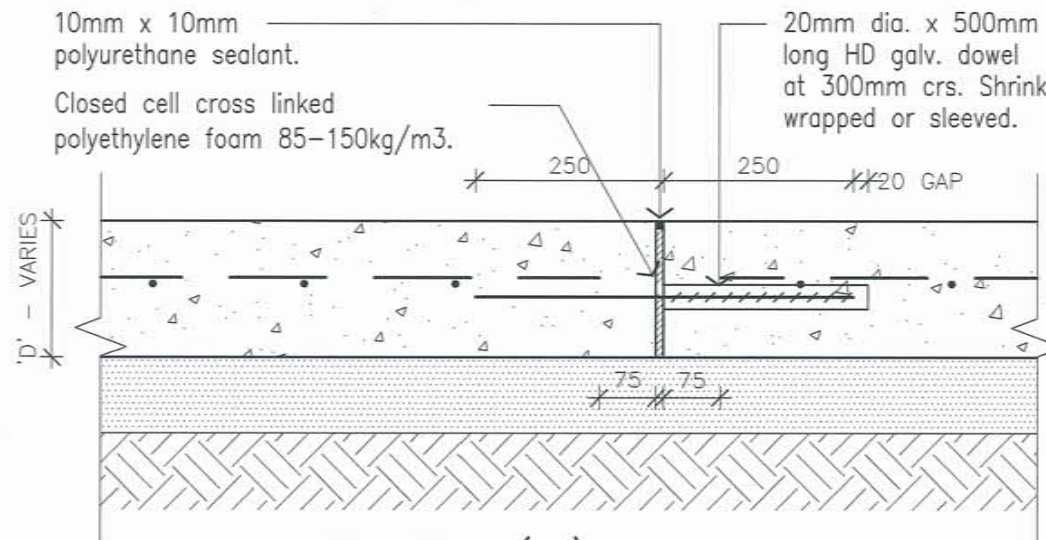
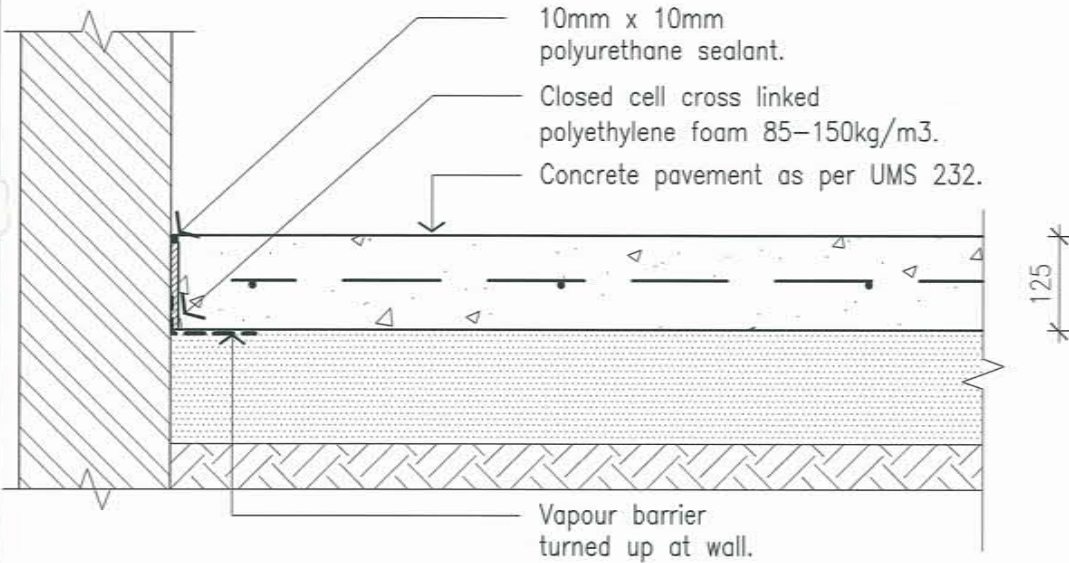


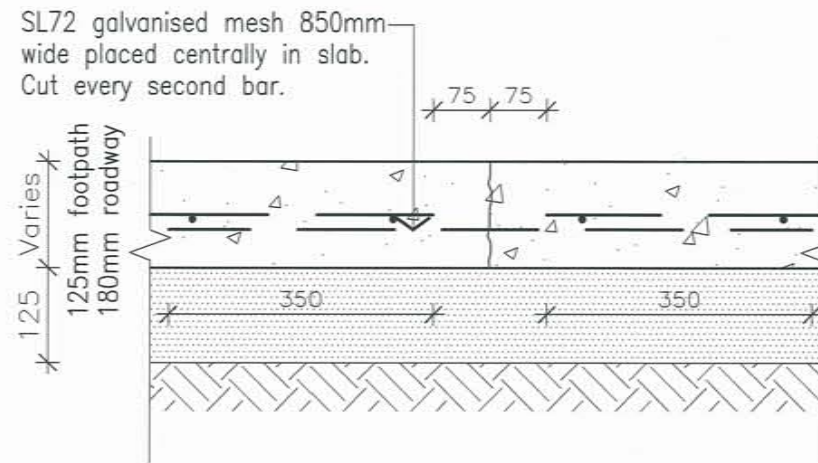
SAWN JOINT (SJ)



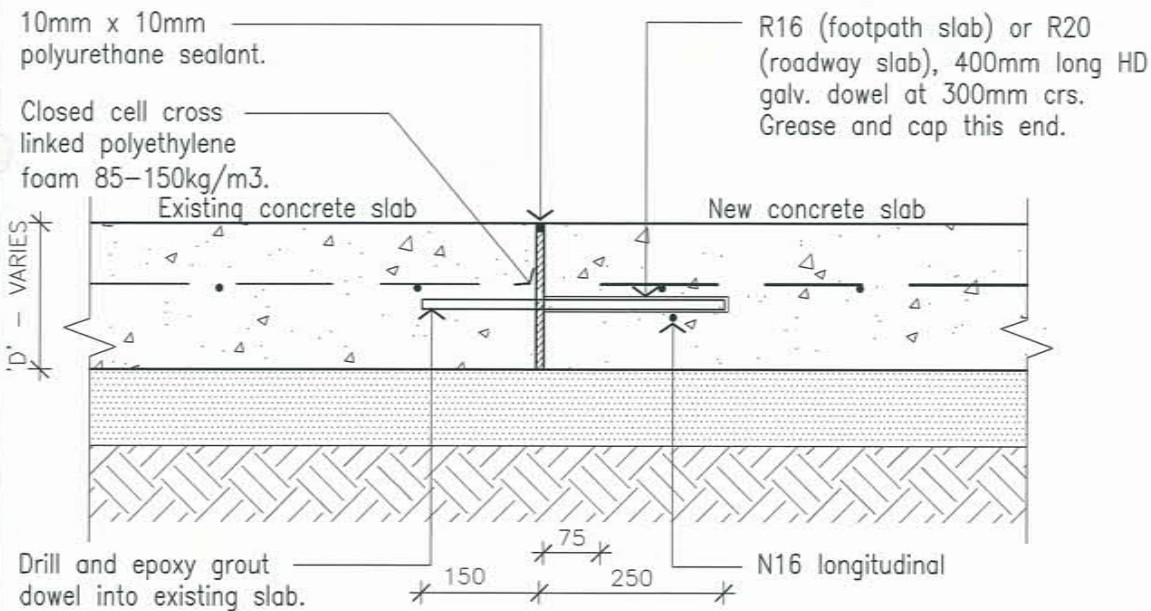
EXPANSION JOINT (EJ)



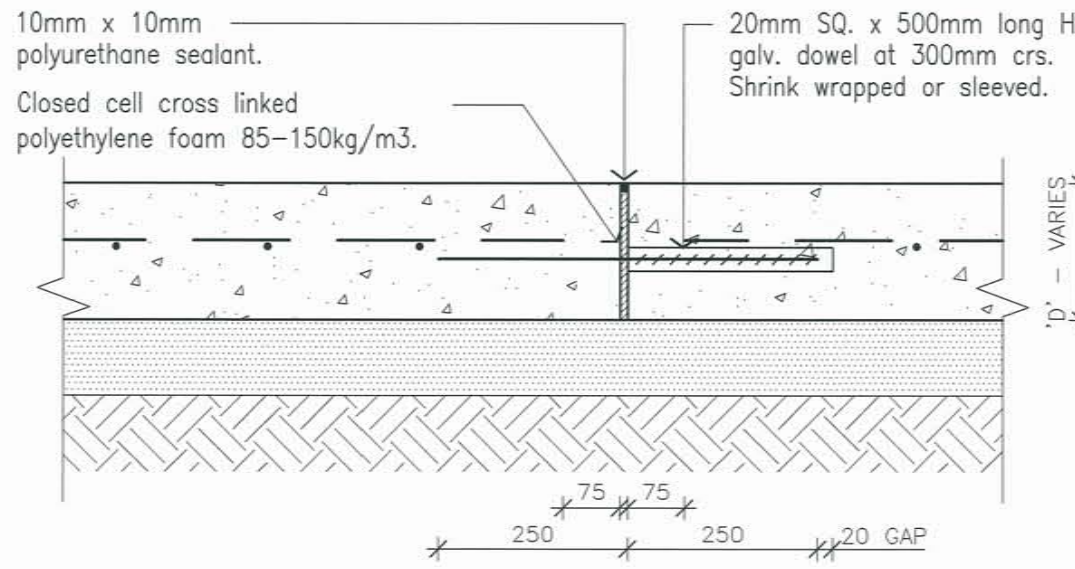
ISOLATION JOINT (IJ)



CONSTRUCTION JOINT (CJ)

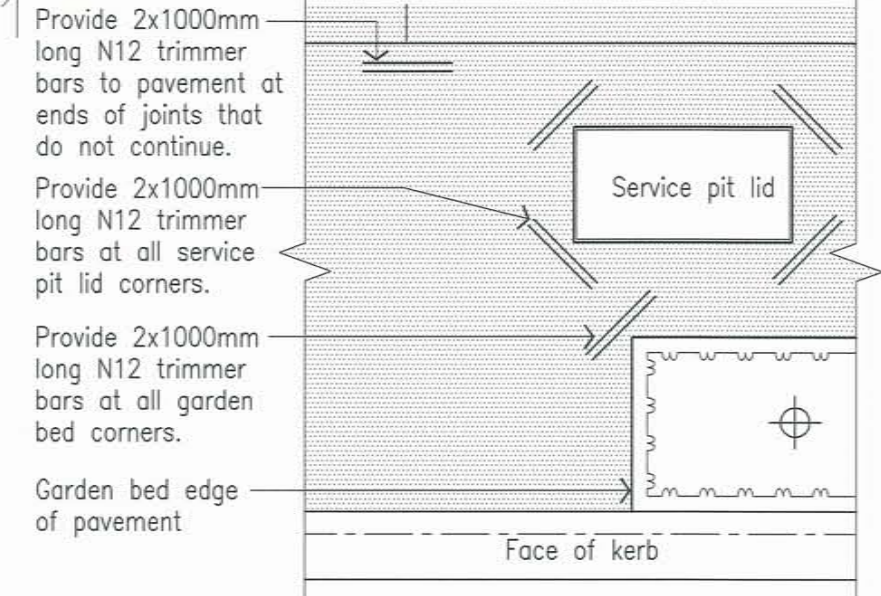


DOWEL JOINT TO EXISTING SLAB



EXPANSION JOINT (EJ2)

Note: There is no need to provide expansion or contraction joints to pit lids or corners of garden beds unless shown on surface treatment plans. Provide trimmer bars opposite all ends of joints that do not continue across adjoining pavement.



SERVICE PIT LIDS - TRIMMER BAR LOCATIONS

GENERAL NOTES

1. Refer to concrete footpath detail on UMS 232 for standard concrete notes and details.
2. Engineer to review reinforcement type when in a marine or corrosive environment.
3. 'D' varies depending on proposed use of footpath. 180mm thick at driveways and 125mm thick elsewhere. Refer to UMS 232.
4. All dowels to be perpendicular to joint and parallel to each other. Dowels to be hot dip galvanised.

STRUCTURAL DESIGN REVIEWED AND CERTIFIED FOR ISSUE
 NAME: **B. BALAKUMAR** RPEQ: 3963
 SIGNATURE: *[Signature]* DATE: 23/07/10

ISSUE	AMENDMENT	DRAWN DATE	CHK'D DATE	APPR'D DATE
A	ORIGINAL ISSUE	JUN '10	JUN '10	JUN '10

DESIGN AUTHORISED FOR ISSUE			
<i>[Signature]</i>	DESIGN	BAS	DATE JUN '10
MANAGER CITY ASSETS, R.P.E.Q. 2546	DRAWN	PRM	DATE JUN '10
DESIGN APPROVED	CHECKED	D.K. 23/7/10	DATE JUN '10
<i>[Signature]</i>	DRAWING FILENAME	UMS 547	
PRINCIPAL OFFICER URBAN DESIGN UNIT	ASSOCIATED PLANS		



BRISBANE CITY COUNCIL STANDARD DRAWING

CONCRETE PAVEMENT JOINT DETAILS AND SERVICE PIT LIDS

SCALE	NOT TO SCALE
DWG NO.	UMS 547
ORIGINAL SIZE	A3
REVISION	A