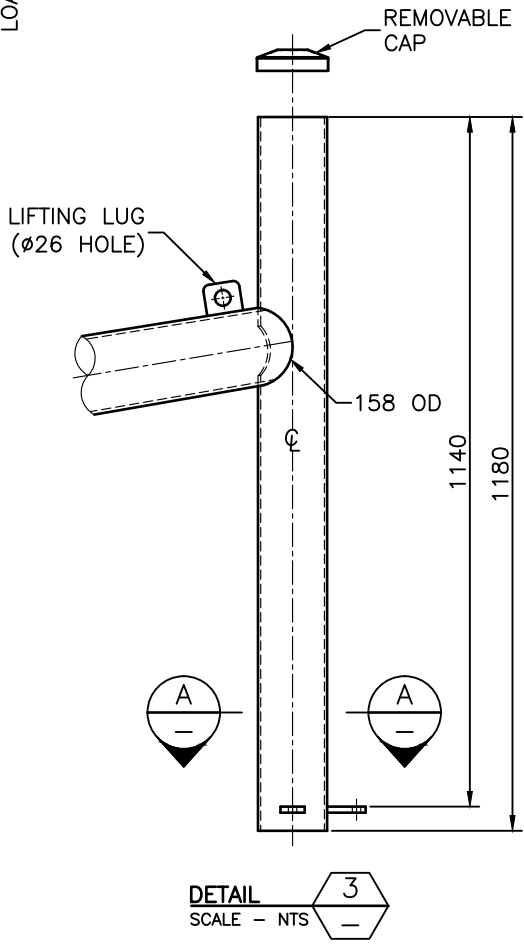
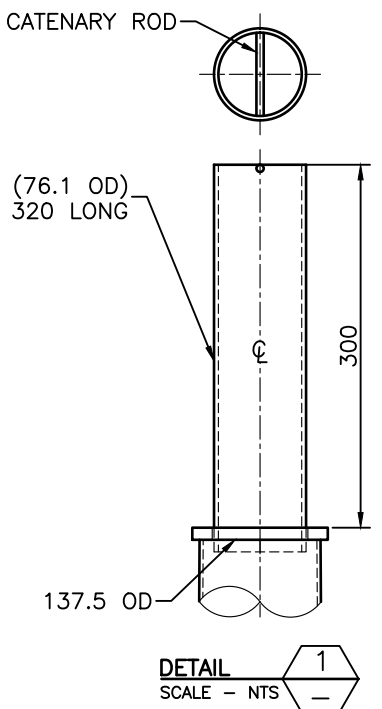
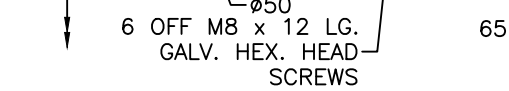
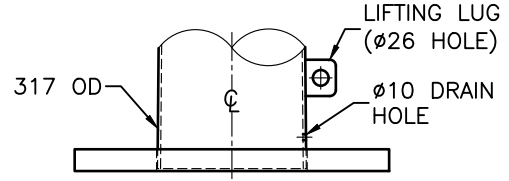
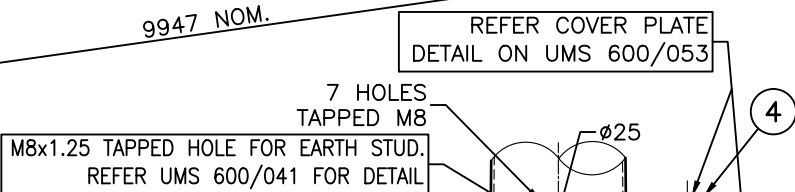
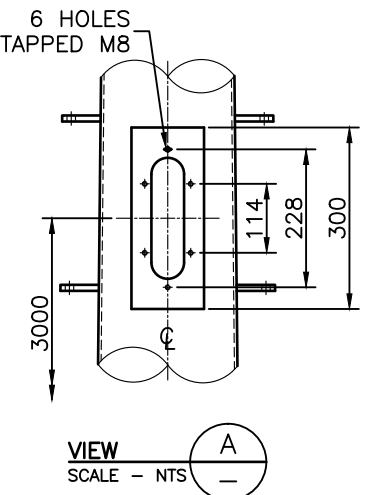


SUPPLIED WITH 2 OFF M12 x 30 LONG, HEX HEAD SCREWS. FITTED WITH 50 OD x 16 ID 4 THK WASHER (1/2" MUD GUARD WASHER)

BASED ON INGAL EPS DRAWINGS AD1494, AD1468, AD1470, A1471, AD1472, AD3491 AND GA2630, GA2631 AND GA2632 (OR APPROVED EQUIVALENT)

SECTION B
SCALE - NTS
10929 NOM.



NOTES:

- FOR PILE FOUNDATION NOTES REFER UMS 600/064.
- MAST ARM OUTREACH TO BE DESIGNED TO SUPPORT TYP. LOADING OF 3 x 6 ASPECT LANTERNS. ADDITIONAL WIND LOADING REQUIREMENT FOR TRAFFIC SIGNAGE TO BE CONSIDERED.
- TRAFFIC SIGNAL MAST ARM POLE TO BE SUPPLIED WITH CAPPED SPIGOT AND BE ABLE TO BE CONVERTED TO COMBINED JOINT USE TRAFFIC SIGNAL/ROAD LIGHT MAST ARM BY REMOVING SPIGOT CAP AND INSTALLING LUMINAIRE TRANSITION PIECE AND LIGHTING OUTREACH.
- ALL DIMENSIONS IN MILLIMETRES (U.N.O.).

AFTER LEVELLING POLE, A NON-SHRINKING GROUT IS TO BE APPLIED IN THE BASEPLATE SLOTS, AROUND THE BOLTS AND BETWEEN THE BASEPLATE AND THE FOOTING.

ISSUE	AMENDMENT	DRAWN DATE	CHK'D DATE	APPR'D DATE
A	ORIGINAL ISSUE	Sept '09	IC 01/11	PC 01/11

DESIGN AUTHORISED FOR ISSUE			
P COTTON SIGNATURE ON ORIGINAL	DESIGN	Ingal EPS	DATE
MANAGER CITY ASSETS - R.P.E.Q: 2546	DRAWN	DJL (CAB)	DATE
DESIGN APPROVED	CHECKED	I. Condric	DATE
I. CONDRIK SIGNATURE ON ORIGINAL DATED 01/11	DRAWING FILENAME	UMS 600/057	
PRINCIPAL ENGINEER	ASSOCIATED PLANS	UMS 600/064	
ROAD NETWORK INFRASTRUCTURE - R.P.E.Q: 8521			



BRISBANE CITY COUNCIL STANDARD DRAWING

11m OUTREACH JOINT USE MAST ARMS BASE PLATE MOUNTED

SCALE: NOT TO SCALE
DWG No: UMS 600/057
ORIGINAL SIZE: A3
REVISION: A