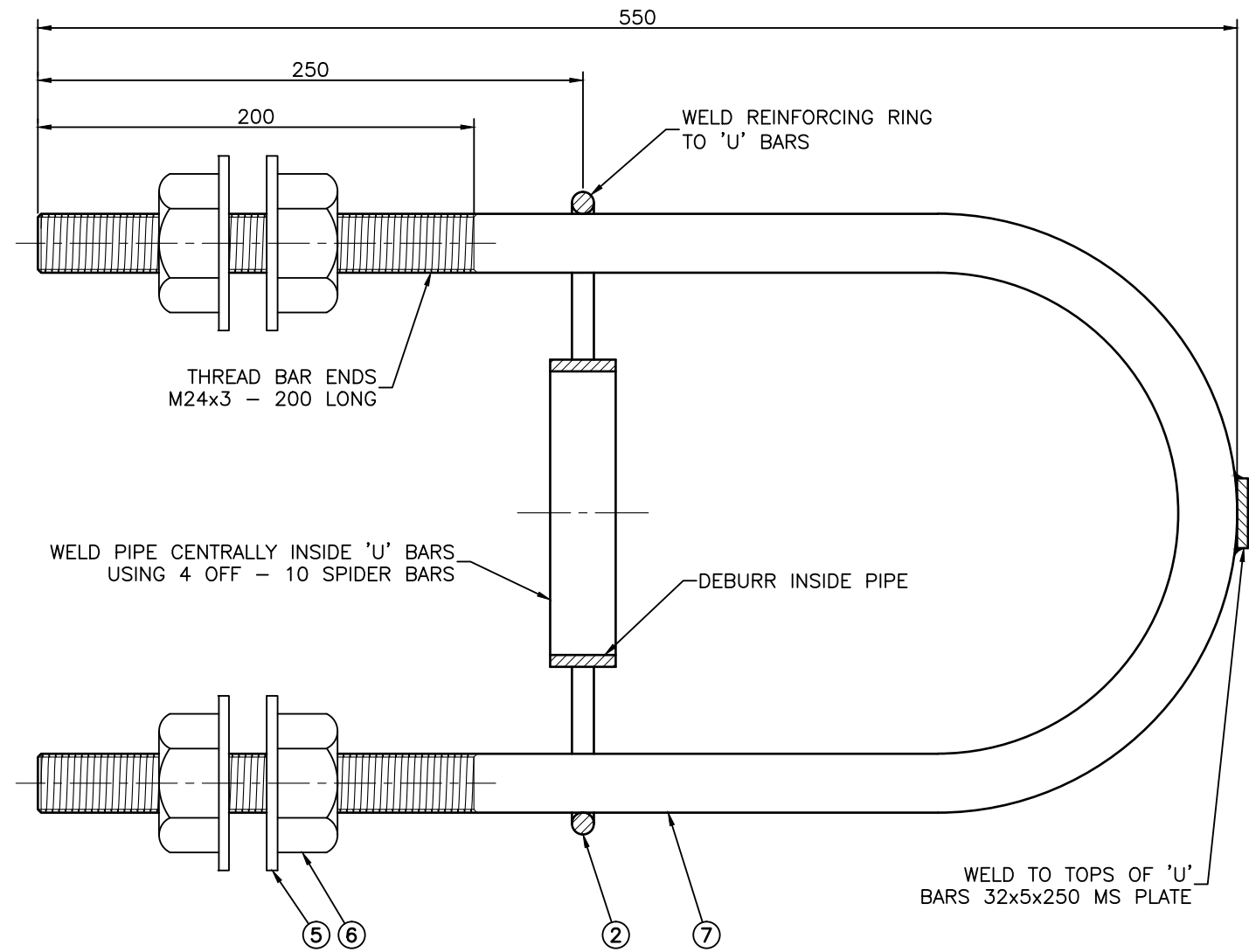


END VIEW



SECTIONAL ELEVATION

MATERIALS LIST

ITEM No.	No. OFF	ITEM DESCRIPTION	MATERIAL DESCRIPTION	LENGTH	GRADE
7	2	'U' SHAPED ANCHOR BAR	N28 BAR WITH M24 THREAD	1220mm	-
6	8	LEVELLING NUTS—REFER TO NOTES 1 & 3	M24 HEX GALV. NUT		8.8/S
5	8	GALVANISED WASHERS	Ø25mm x 5mm GALV. WASHERS		-
4	4	SPIDER BAR TIE	Ø10mm ROUND STEEL BAR	102mm	M.S.
3	1	SPIDER CENTRE RING	130NBx5.4mm WALL BLACK PIPE	30mm	Gr 250
2	1	REINFORCING RING	Ø10mm ROUND STEEL BAR	1110mm	M.S.
1	1	BOTTOM STRAP TIE	32x5mm FLAT STEEL BAR	250mm	M.S.

NOTES:

1. ALL NUTS TO CONFORM TO AS1112 AND AS1252 & HOT DIPPED GALVANISED TO AS1214.
2. ALL WASHERS TO BE HOT DIPPED GALVANISED TO AS1214.
3. SCREW ON EACH BAR TWO NUTS WITH TWO FLAT WASHERS BETWEEN THEM AFTER GALVANISING.
4. ANCHOR CAGE ASSEMBLY TO BE CLEANED AND THE WELDING SLAG REMOVE PRIOR TO BEING HOT DIP GALVANISED TO AS/NZS4680 AND AS1214.
5. THREADS SHOULD BE CLEAN AFTER GALVANISING AND A TEMPLATE PLACED OVER THREADED ENDS TO ENSURE THE ACCURACY OF THE P.C.D. OF BARS.
6. THIS 4 BAR GALVANISED CAGE WEIGHS 14kg.
7. TOLERANCES: DIMENSIONAL ±5.0 U.N.O., HOLE CENTRES ±1.0 U.N.O.
8. DIMENSIONS IN MILLIMETRES (U.N.O.).

ISSUE	AMENDMENT	DRAWN DATE	CHK'D DATE	APPR'D DATE
C	'U' Bar Material Amend., Notes 1 & 4 Amend.	DL 08/09	IC 12/10	PC 01/11
B	'U' SHAPED ANCHOR BAR AMENDED	May '05	CIG 09.12.05	AMG 09.12.05
A	ORIGINAL ISSUE	April '01	May '01	June '01

DESIGN AUTHORIZED FOR ISSUE B. BALL SIGNATURE ON ORIGINAL DATED 29/6/01				DESIGN	STD DWG GROUP	DATE	April '01
MANAGER ASSET SUPPORT - R.P.E.Q: 3 8 5 2				DRAWN	CITY DESIGN	DATE	April '01
DESIGN APPROVED K. MEMORY SIGNATURE ON ORIGINAL DATED 27/6/01				CHECKED	R. WILSON	DATE	May '01
SENIOR PROGRAM OFFICER NETWORK OPERATIONS - R.P.E.Q: 4 7 6 1				DRAWING FILENAME	UMS 600_061		
				ASSOCIATED PLANS	Previous Dwg No. UMS 649		



BRISBANE CITY COUNCIL STANDARD DRAWING

**RAGBOLT ASSEMBLIES
PEDESTAL**

SCALE: NOT TO SCALE
DWG No. **UMS 600/061**
ORIGINAL SIZE: A3 REVISION: C