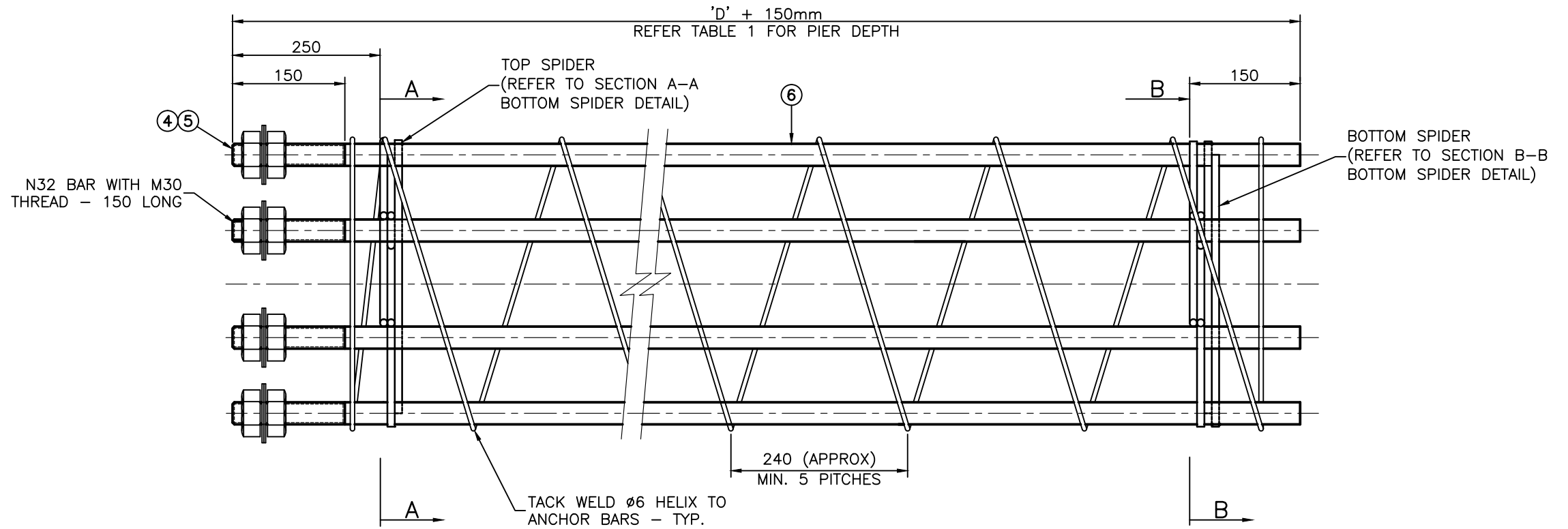


TOP ELEVATION



ELEVATION

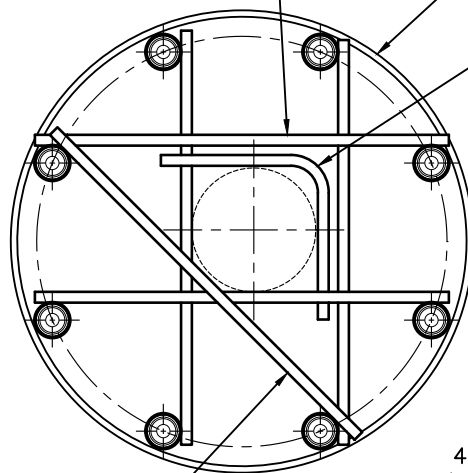
TABLE 1 – BORED PIER DEPTH TABLE

SOIL CLASS	STRENGTH (f'b) (kPa)	EMBEDMENT DEPTH (D)
SOFT (POOR)	80~100	2600
FIRM (AVERAGE)	101~150	2100

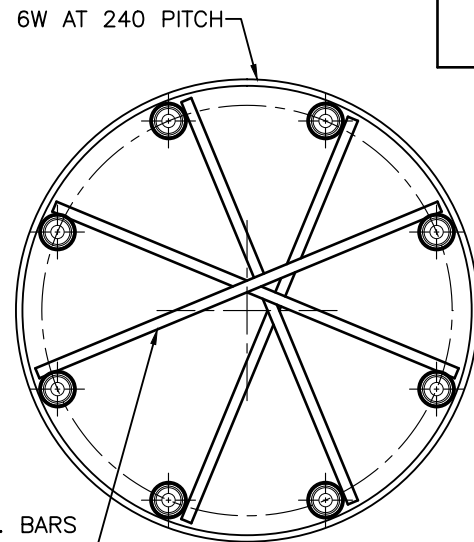
DESIGN ASSUMPTIONS MADE

- ANY UNIDENTIFIED DIMENSIONS FOR THE MASTARM WERE SCALED FROM STANDARD DRAWING UMS 600/053. THESE DIMENSIONS WERE CONSIDERED SUFFICIENTLY ACCURATE FOR THE CALCULATIONS
- LUMINAIRE HEIGHT IS CONSIDERED TO BE 12.0m.

4 OFF BARS TO BE WELDED ② TO EACH OTHER AND TO ANCHOR BARS



**SECTION A-A
TOP SPIDER DETAILS**



**SECTION B-B
BOTTOM SPIDER DETAILS**

NOTES

1. ALL NUTS TO CONFORM TO AS1112 & HOT DIPPED GALVANISED TO AS1214.
2. ALL WASHERS TO BE HOT DIPPED GALVANISED TO AS1214.
3. SCREW ON EACH BAR TWO NUTS WITH TWO FLAT WASHERS BETWEEN THEM AFTER GALVANISING.
4. ANCHOR CAGE ASSEMBLY TO BE CLEANED AND THE WELDING SLAG REMOVE PRIOR TO BEING HOT DIP GALVANISED TO AS/NZS4680.
5. THREADS SHOULD BE CLEAN AFTER GALVANISING & A TEMPLATE PLACED OVER THREADED ENDS TO ENSURE THE ACCURACY OF THE P.C.D. OF BARS.
6. THIS 8 BAR GALVANISED CAGE WEIGHS 152kg.
7. TOLERANCES: DIMENSIONAL ±5.0 UNO, HOLE CENTRES ±1.0 UNO.
8. DIMENSIONS IN MILLIMETRES (UNO).

TABLE 2 – MATERIALS LIST

ITEM No.	No. OFF	ITEM DESCRIPTION	MATERIAL DESCRIPTION	LENGTH	GRADE
7	4	BOTTOM SPIDER CROSS BAR	Ø10mm ROUND STEEL BAR	400mm	M.S.
6	8	ANCHOR BAR	N32 BAR	'D'+150mm	—
5	16	LEVELLING NUTS—REFER TO NOTES 1 & 3	M30 HEX GALV NUT		8.8/S
4	16	GALVANISED WASHERS—REFER TO NOTES 2 & 3	Ø31mm x 5mm GALV. WASHERS		—
3	1	TOP SPIDER POSITIONING BAR	Ø10mm ROUND STEEL BAR	275mm	M.S.
2	4	TOP SPIDER CROSS BAR	Ø12mm ROUND STEEL BAR	385mm	M.S.
1	1	TOP SPIDER CROSS BRACE	Ø10mm ROUND STEEL BAR	400mm	M.S.

ISSUE	DRAWN DATE	CHK'D DATE	APPR'D DATE
C	Dwg Title & No. Changed, Elevation & Note 6 Mod.	Nov. '09	IC 12/10 PC 01/11
B	Elevation, Top Elevation, Section A-A & Section B-B Details and Notes Modified, Materials List Modified	Nov. '04	CIG 02/05 AG 02/05
A	ORIGINAL ISSUE	April '01	May '01 June '01

DESIGN AUTHORIZED FOR ISSUE B. BALL SIGNATURE ON ORIGINAL DATED 29/6/01	DESIGN	STD DWG GROUP	DATE	April '01
MANAGER ASSET SUPPORT - R.P.E.Q: 3 8 5 2	DRAWN	CITY DESIGN	DATE	April '01
DESIGN APPROVED K. MEMORY SIGNATURE ON ORIGINAL DATED 27/6/01	CHECKED	R. WILSON	DATE	May '01
SENIOR PROGRAM OFFICER NETWORK OPERATIONS - R.P.E.Q: 4 1 6 1	DRAWING FILENAME	UMS 600/063		
	ASSOCIATED PLANS	Previous Dwg No. UMS 648		



BRISBANE CITY COUNCIL STANDARD DRAWING

**RAGBOLT ASSEMBLIES
MAST ARM
2.5 & 5.0M OUTREACH**

SCALE	
NOT TO SCALE	
DWG No.	UMS 600/063
ORIGINAL SIZE	REVISION
A3	C