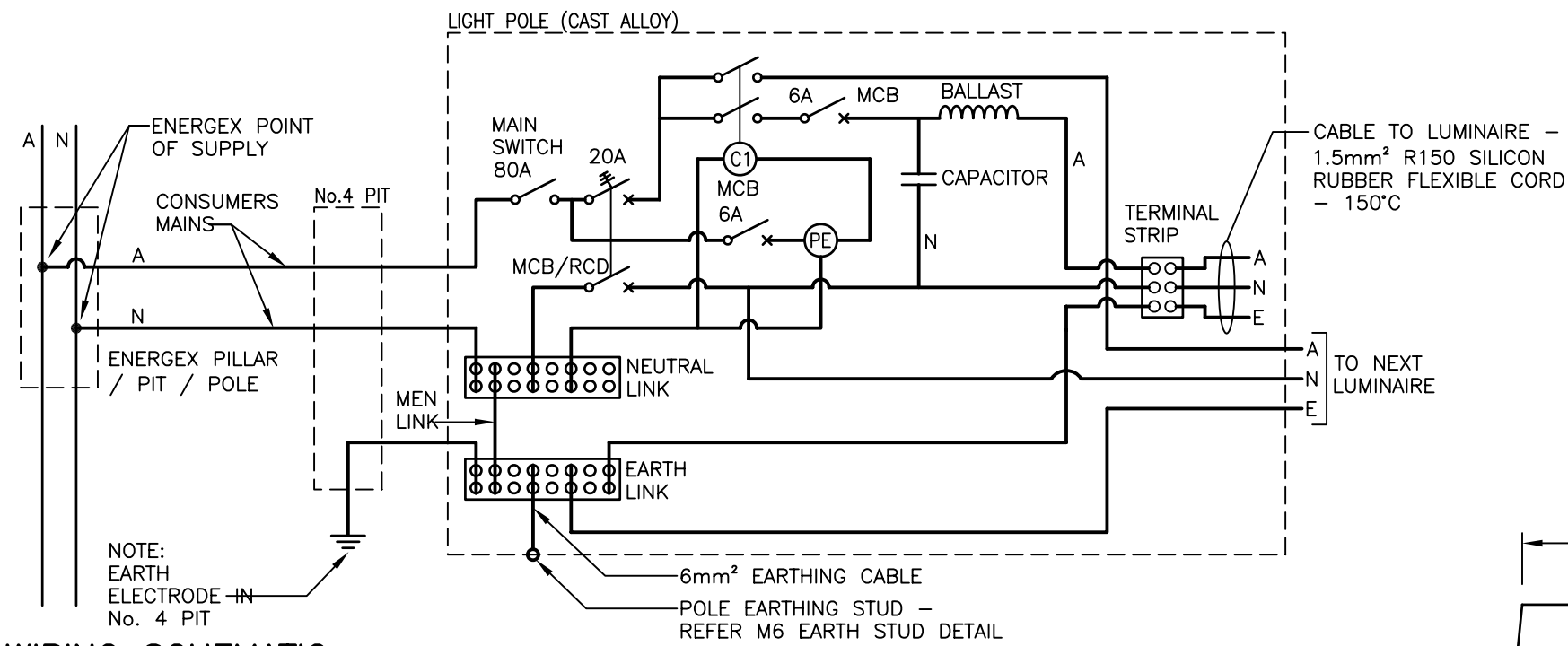


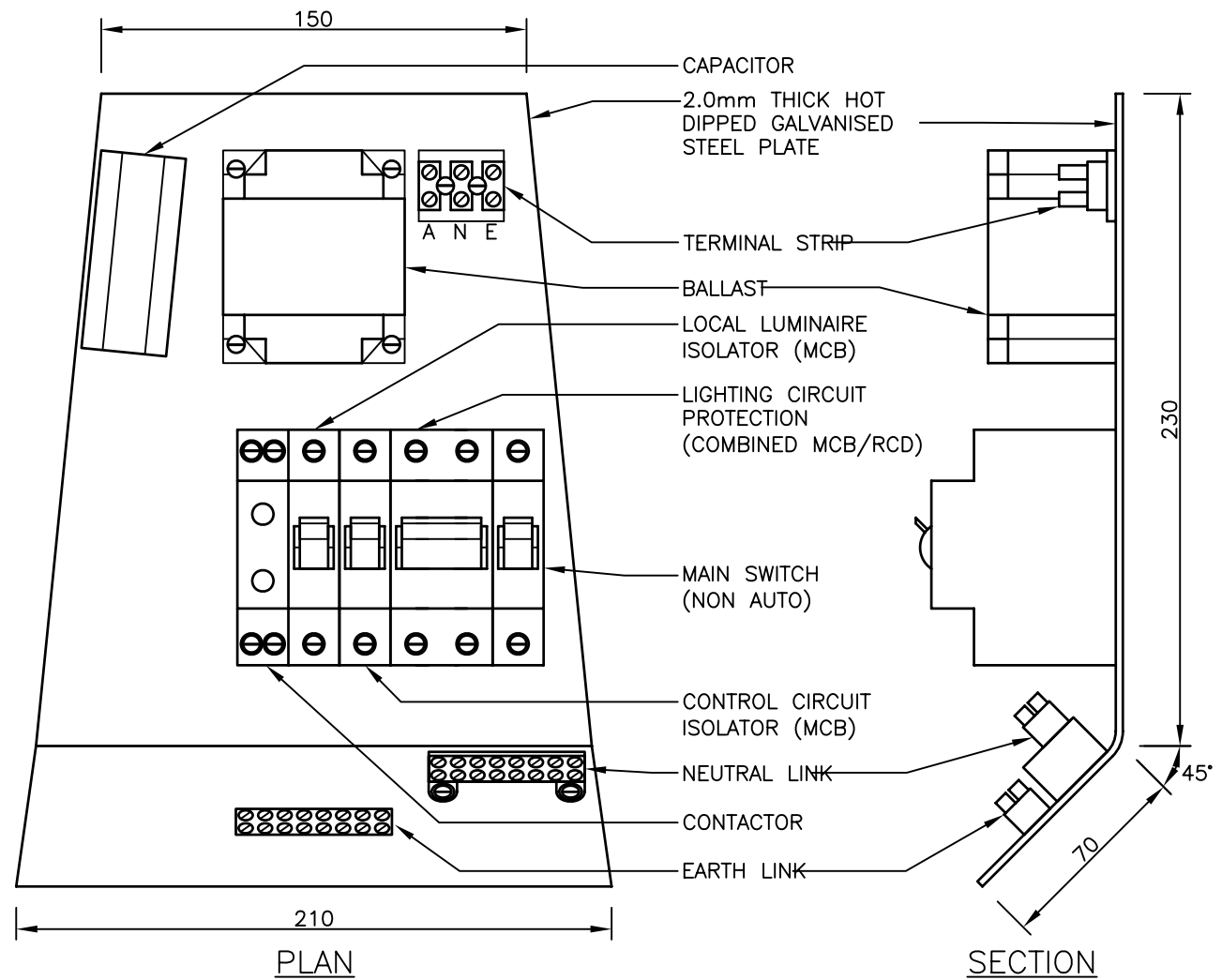
**DESIGN REVIEWED AND CERTIFIED FOR ISSUE**  
 NAME: Robin Russell RPEQ: 1546  
 SIGNATURE: On Original Drawing DATE: 24/08/08



**WIRING SCHEMATIC**  
 NOT TO SCALE

- NOTES**
1. ELECTRICAL INSTALLATION SHALL COMPLY WITH AS/NZS.3000.
  2. PE CELL IS TO BE INSTALLED 50mm ABOVE THE TOP OF THE REMOVABLE ACCESS PANEL, FACING TOWARDS THE PROPERTY BOUNDARY.
  3. THE ELECTRICAL CONDUIT INSTALLED PARALLEL TO THE PROPERTY BOUNDARY IS TO BE POSITIONED WITHIN THE 0 - 900mm UNDERGROUND ELECTRICITY ALIGNMENT WITH A MINIMUM CLEARANCE OF 100mm FROM OTHER ELECTRICAL CONDUITS, AND LOCATED ON THE ROADWAY SIDE OF THE 0 - 900mm UNDERGROUND ELECTRICITY ALIGNMENT. REFER TO BRISBANE CITY COUNCIL STANDARD DRAWINGS UMS 121 TO UMS 124 FOR FURTHER DETAILS.
  4. MAIN SWITCHBOARDS AND CONTROL PANELS CAN BE PURCHASED FROM BRISBANE CITY COUNCIL. CONTACT CITY LIGHTING SECTION ON TELEPHONE No. 07 3027 4404 TO ARRANGE.
  5. ENDS OF CONDUITS ARE TO BE SEALED WITH SILICON OR SIMILAR SUITABLE SEALANT TO PREVENT INGRESS OF VERMIN.
  6. EXTERNAL BASE OF LIGHT POLE IS TO BE SEALED WITH MORTAR OR SIMILAR SUITABLE MATERIAL TO PREVENT INGRESS OF VERMIN.
  7. ALL DIMENSIONS IN MILLIMETRES (U.N.O.).

EQUIPMENT LIST	
ITEM	DESCRIPTION
MAIN SWITCH	80 AMP - NON AUTO - DIN RAIL MOUNTED - 10kA - CLIPSAL OR EQUAL APPROVED
COMBINED MINIATURE CIRCUIT BREAKER AND RESIDUAL CURRENT DEVICE (MCB/RCD)	20 AMP - DIN RAIL MOUNTED - TYPE A - C CURVE RCD - 30mA TRIPPING CURRENT - 10kA - 2 POLE TYPE - CLIPSAL OR EQUAL APPROVED
MINIATURE CIRCUIT BREAKER (MCB)	6 AMP - DIN RAIL MOUNTED - 10kA - CLIPSAL OR EQUAL APPROVED
NEUTRAL LINK	INSULATED BASE TYPE - 16mm² TERMINALS - 1 MEN + 6 - 2 SCREW TYPE - 100 AMP RATING
EARTH LINK	16mm² TERMINALS - 1 MEN + 6 - 2 SCREW TYPE - 100 AMP RATING
CONTACTOR	MINIMUM 20 AMP - AC3 - 2 POLE - 240V - DIN RAIL MOUNTED - SPRECHER & SCHUH OR EQUAL APPROVED
PE CELL	PHOTO MICROSWITCH - 1000 WATT OUTPUT - ATCO FM S220 OR EQUAL APPROVED
TERMINAL STRIP	15 AMP - INSULATED TYPE - 2 SCREW TYPE - CLIPSAL OR EQUAL APPROVED



**MAIN SWITCHBOARD & CONTROL PANEL ARRANGEMENT**  
 SCALE 1:25 (APPROX)

ISSUE	AMENDMENT	DRAWN DATE	CHK'D DATE	APPR'D DATE
A	ORIGINAL ISSUE	JUL '09	JUL '09	Sept '09

DESIGN AUTHORISED FOR ISSUE			
DESIGN	B.T.	DATE	JULY 09
DRAWN	T.O.	DATE	JUL 09
CHECKED	B.T.	DATE	JUL 09
DRAWING FILENAME	/UMS 591.dwg		
ASSOCIATED PLANS	Centres Detail Design Manual Appendix F Diagrams		



**BRISBANE CITY COUNCIL STANDARD DRAWING**

**PEDESTRIAN LIGHTING MAIN SWITCHBOARD & CONTROL PANEL ARRANGEMENT & SCHEMATIC**

SCALE AS SHOWN @ A3  
 DWG No. **UMS 591**  
 ORIGINAL SIZE A3 REVISION A