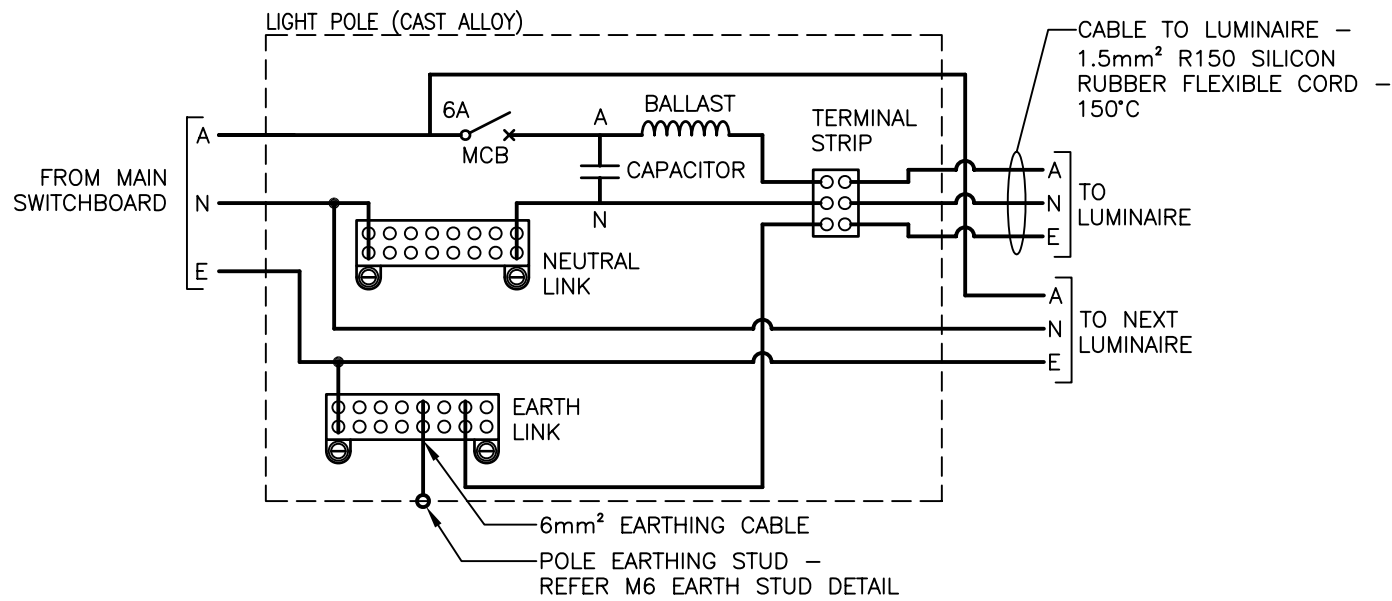


EQUIPMENT LIST

| ITEM | DESCRIPTION |
|---------------------------------|-----------------------------------------------------------------------------------------------|
| MINIATURE CIRCUIT BREAKER (MCB) | 6 AMP - DIN RAIL MOUNTED - 10kA - CLIPSAL OR EQUAL APPROVED |
| NEUTRAL LINK | INSULATED BASE TYPE - 16mm ² TERMINALS - 1 MEN + 6 - 2 SCREW TYPE - 100 AMP RATING |
| EARTH LINK | 16mm ² TERMINALS - 1 MEN + 6 - 2 SCREW TYPE - 100 AMP RATING |
| TERMINAL STRIP | 15 AMP - INSULATED TYPE - 2 SCREW TYPE - CLIPSAL OR EQUAL APPROVED |

DESIGN REVIEWED AND CERTIFIED FOR ISSUE

NAME: Robin Russell RPEQ: 1546
SIGNATURE: On Original Drawing DATE: 24/08/08

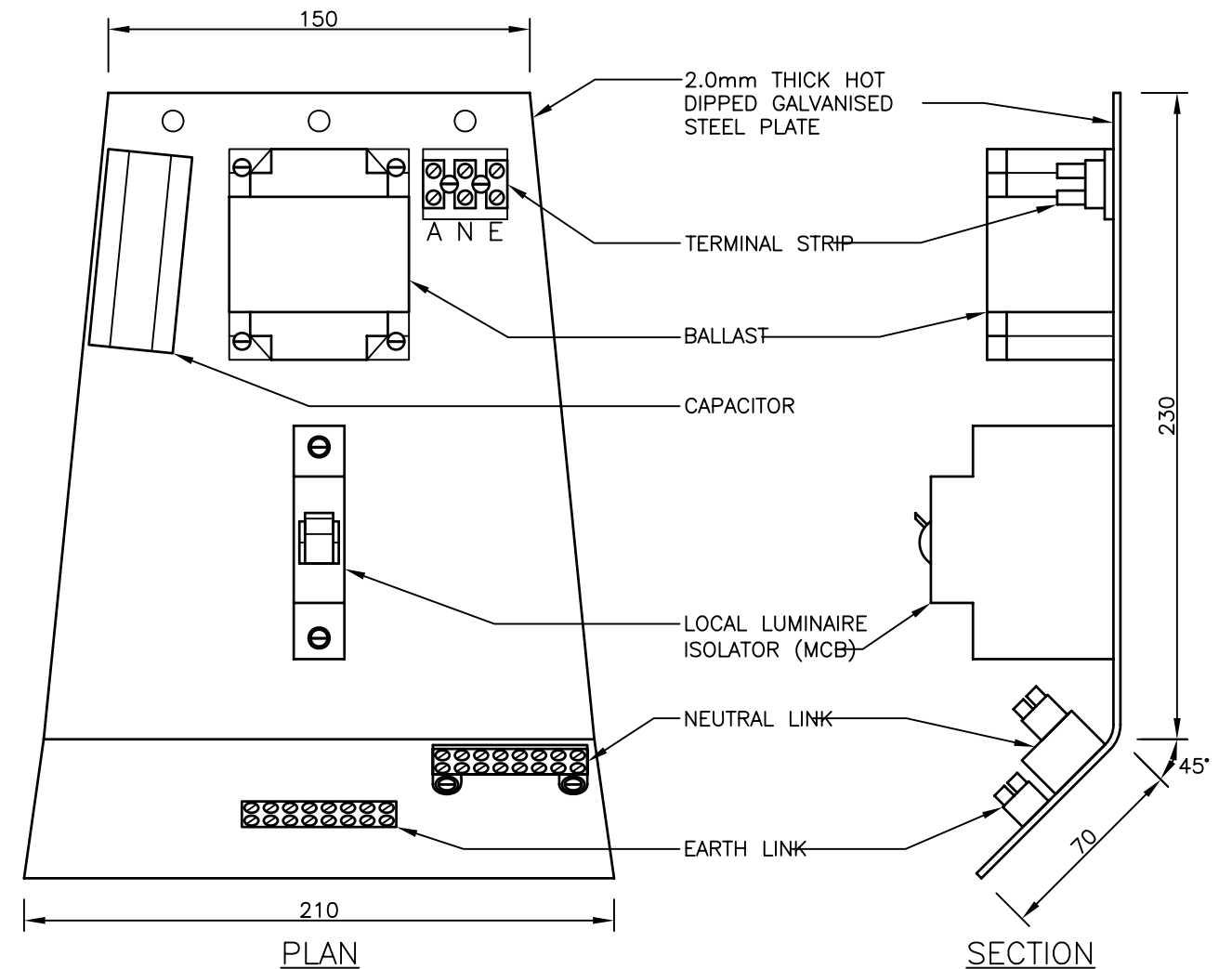


WIRING SCHEMATIC

NOT TO SCALE

NOTES

- ELECTRICAL INSTALLATION SHALL COMPLY WITH AS/NZS.3000.
- THE ELECTRICAL CONDUIT INSTALLED PARALLEL TO THE PROPERTY BOUNDARY IS TO BE POSITIONED WITHIN THE 0 - 900mm UNDERGROUND ELECTRICITY ALIGNMENT WITH A MINIMUM CLEARANCE OF 100mm FROM OTHER ELECTRICAL CONDUITS, AND LOCATED ON THE ROADWAY SIDE OF THE 0 - 900mm UNDERGROUND ELECTRICITY ALIGNMENT. REFER TO BRISBANE CITY COUNCIL STANDARD DRAWINGS UMS 121 TO UMS 124 FOR FURTHER DETAILS.
- MAIN SWITCHBOARDS AND CONTROL PANELS CAN BE PURCHASED FROM BRISBANE CITY COUNCIL. CONTACT CITY LIGHTING SECTION ON TELEPHONE No. 07 3027 4404 TO ARRANGE.
- ENDS OF CONDUITS ARE TO BE SEALED WITH SILICON OR SIMILAR SUITABLE SEALANT TO PREVENT INGRESS OF VERMIN.
- EXTERNAL BASE OF LIGHT POLE IS TO BE SEALED WITH MORTAR OR SIMILAR SUITABLE MATERIAL TO PREVENT INGRESS OF VERMIN.
- ALL DIMENSIONS IN MILLIMETRES (U.N.O.).



CONTROL PANEL ARRANGEMENT

SCALE 1:25 (APPROX)

| ISSUE | AMENDMENT | DRAWN DATE | CHK'D DATE | APPR'D DATE |
|-------|----------------|------------|------------|-------------|
| A | ORIGINAL ISSUE | JUL '09 | JUL '09 | Sept '09 |

| DESIGN AUTHORISED FOR ISSUE | | | |
|-----------------------------|--------------------------------------------------|------|---------|
| DESIGN | B.T. | DATE | JULY 09 |
| DRAWN | T.O. | DATE | JUL 09 |
| CHECKED | B.T. | DATE | JUL 09 |
| DRAWING FILENAME | /UMS 592.dwg | | |
| ASSOCIATED PLANS | Centres Detail Design Manual Appendix F Diagrams | | |



BRISBANE CITY COUNCIL STANDARD DRAWING

PEDESTRIAN LIGHTING CONTROL PANEL ARRANGEMENT & SCHEMATIC

| SCALE AS SHOWN @ A3 | |
|---------------------|----------------|
| DWG No. | UMS 592 |
| ORIGINAL SIZE | A3 |
| REVISION | A |