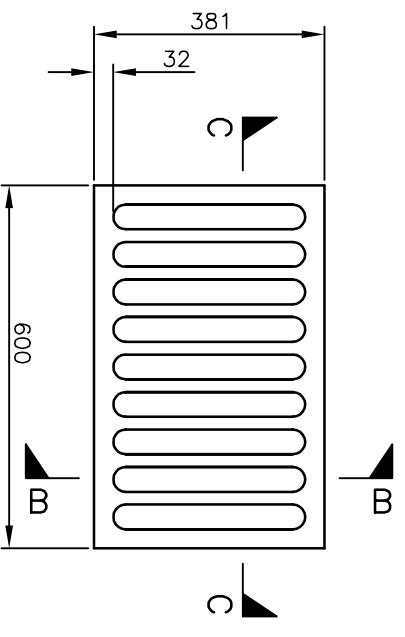
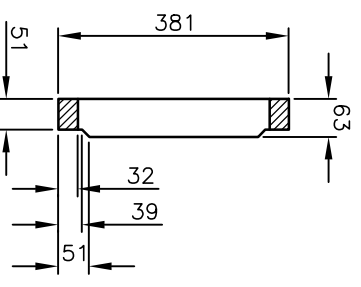


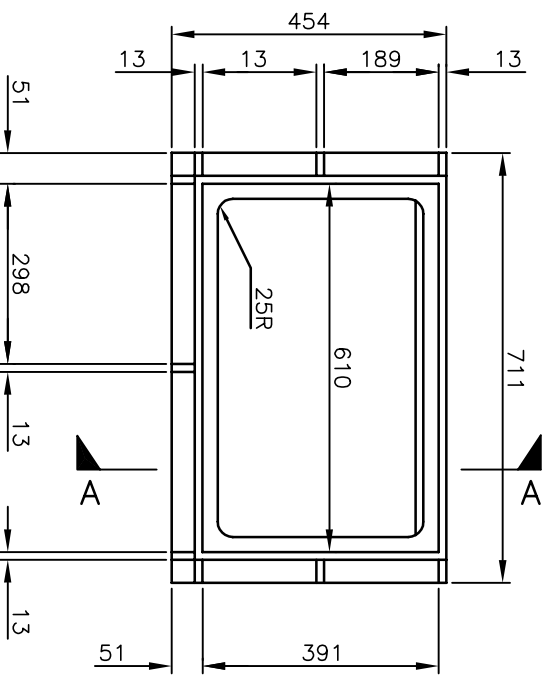
SECTION C-C



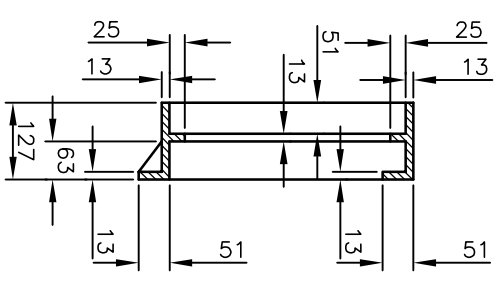
PLAN OF SINGLE GRATE



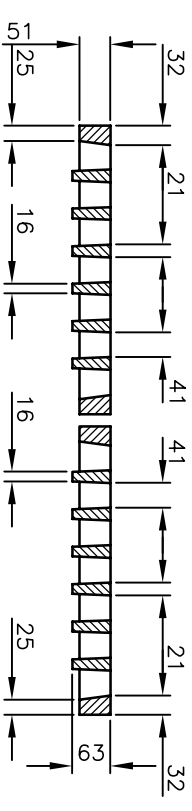
SECTION B-B



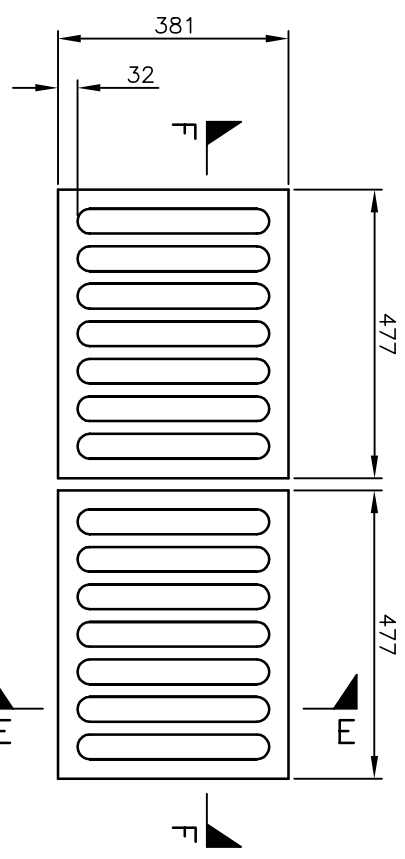
PLAN OF SINGLE FRAME SECTION A-A



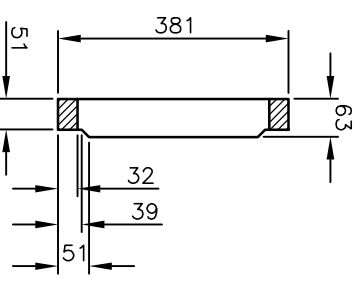
SECTION D-D



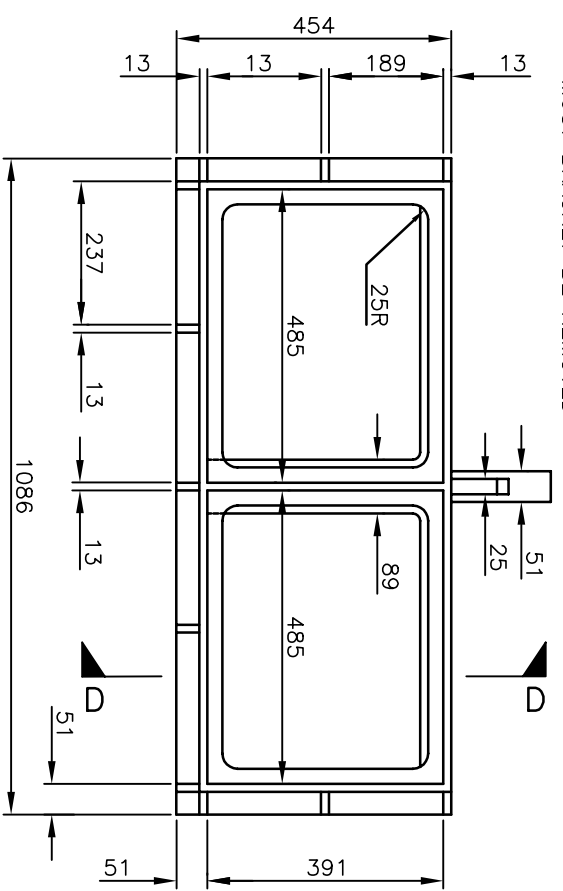
SECTION F-F



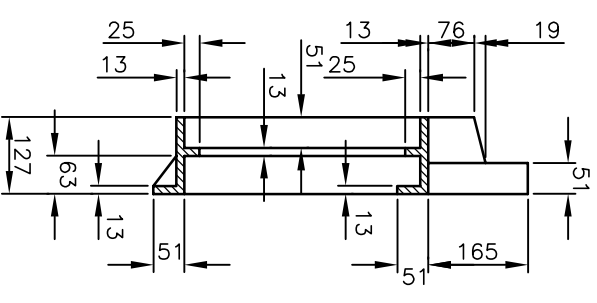
PLAN OF DOUBLE GRATE



SECTION E-E



PLAN OF DOUBLE FRAME

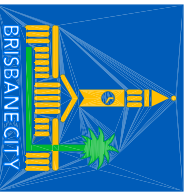


NOTES

1. FOR COUNCIL USE ONLY. TYPE 'E' (CITY TYPE) GULLIES & BACKSTONES ONLY TO BE USED WITH APPROVAL OF MANAGER WATERWAYS OR DELEGATED AUTHORITY. USE IS GENERALLY LIMITED TO RETROFITTING.
2. GRATES & FRAMES TO BE HOT DIPPED IN BITUMEN BASED PRODUCT TO BS 3416 OR BS 4147.
3. CASTINGS TO CONFORM TO AS 1830 AND AS 1831.
4. GRATE TO HAVE PERMANENT VISIBLE MARKING STATING MANUFACTURER, GRATE CLASS & DATE OF MANUFACTURE TO AS 3996.
5. DIMENSIONS IN MILLIMETRES U.N.O.

ISSUE	AMENDMENT	DRAWN DATE	CHK'D DATE	APPR'D DATE
A	ORIGINAL ISSUE	April '01	May '01	June '01

DESIGN AUTHORISED FOR ISSUE B. BALL SIGNATURE ON ORIGINAL DATED 29/6/01	DESIGN DRAWN	STD DWG GROUP CITY DESIGN	DATE April '01
MANAGER ASSET SUPPORT - R.P.E.G.: 3, 8, 5, 2 DESIGN APPROVED B. HANSEN SIGNATURE ON ORIGINAL DATED 27/6/01	CHECKED DRAWING FILENAME ASSOCIATED PLANS	M. STEER VMS 336 SUPERSEDES	DATE May '01



BRISBANE CITY COUNCIL - URBAN MANAGEMENT DIVISION

TYPE 'E' GULLY GRATES AND FRAME (CITY TYPE)

SCALE DWG No.	NOT TO SCALE
ORIGINAL SIZE	UMS 336
A3	REVISION A