

NOTES:

- ELECTRICITY CONDUITS ADOPTED ARE TYPICALLY:
 Ø40 FOR STREET LIGHTING
 Ø80 FOR LV, 11KV
 Ø100 FOR HV, 33KV
- COMMUNICATIONS CONFIGURATIONS CONSIST OF:
 DISTRIBUTION:
 Ø100 CONDUITS AND PITS INSTALLED IN A COMMON TRENCH WITH ELECTRICITY ON EITHER LOW OR HIGH SIDE (REFER NOTES 3 AND 4 ON UMS 123)
 MAINS:
 MULTIPLE Ø100 CONDUITS AND LARGE MANHOLES WITH TELECOMMUNICATIONS ALIGNMENT ON LOW SIDE.

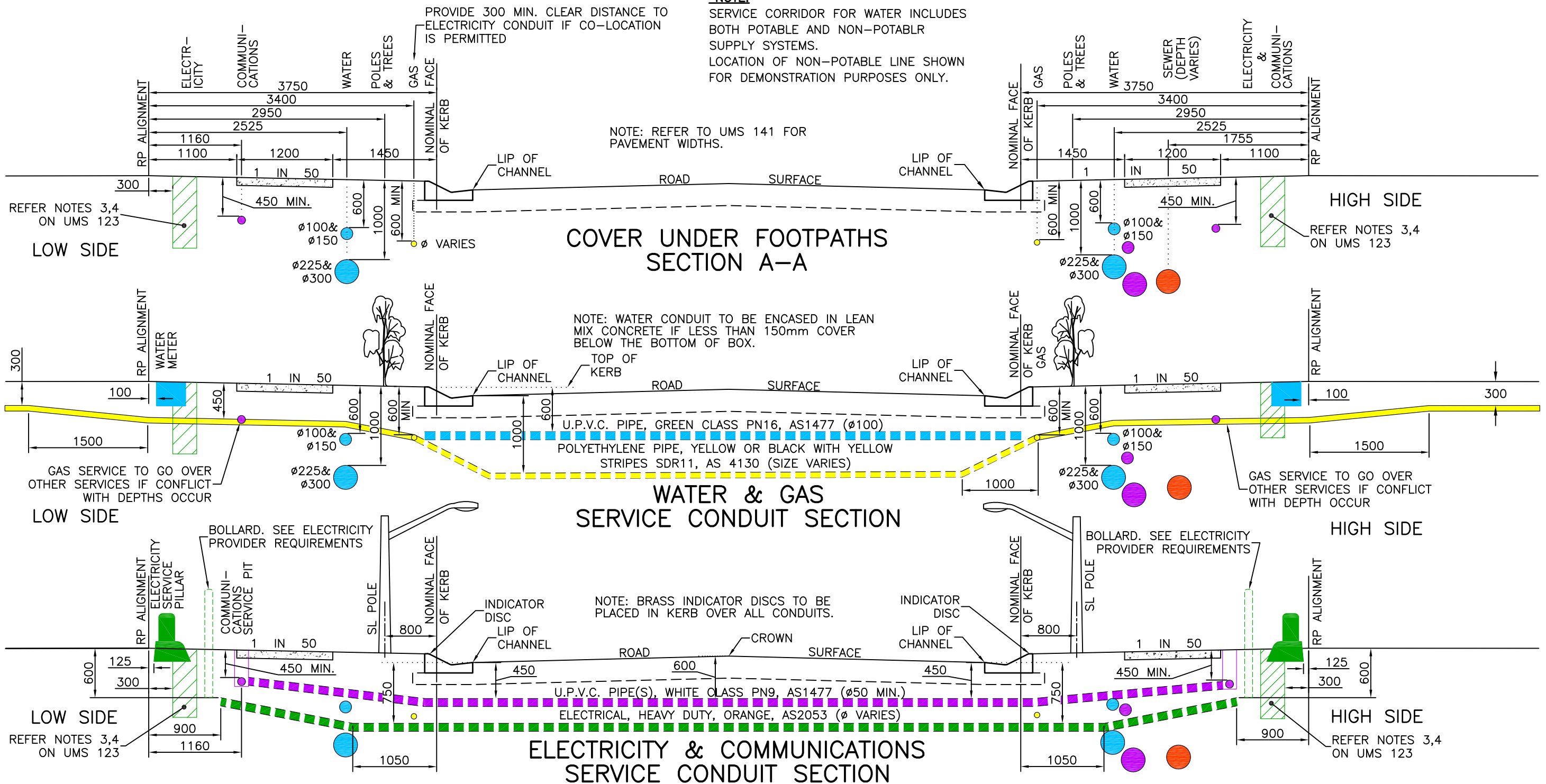
- IN ADDITION TO THE CARRIERS CONDUITS, PROVIDE A SERVICES COMMUNICATION CONDUIT TO ACCOMMODATE FUTURE DATALINK AND COMMUNITY INFRASTRUCTURE IN THE SPECIFIED LOCATIONS.
- FOR WATER PROPERTY SERVICES DETAILS, REFER BRISBANE WATER STANDARD DRAWINGS 486/4/25-WC002/8 & WC002/9 (SINGLE SYSTEM) AND 486/4/25-RW1803 AND RW1804 (DUAL WATER SYSTEM)
- ALL DIMENSIONS IN MILLIMETRES (U.N.O.).

LEGEND

ROAD CROSSING CONDUITS SHOWN BY DASHED LINES		
GAS		YELLOW
POTABLE WATER		BLUE (LIGHT)
NON-POTABLE WATER		PURPLE
SEWER		RED
COMMUNICATIONS		PINK
ELECTRICITY		GREEN
STREET LIGHT RETIC		BLUE (DARK)

*NOTE:

SERVICE CORRIDOR FOR WATER INCLUDES BOTH POTABLE AND NON-POTABLE SUPPLY SYSTEMS.
 LOCATION OF NON-POTABLE LINE SHOWN FOR DEMONSTRATION PURPOSES ONLY.



D	Communications/Telecommunications Term. Mod, Notes 2 & 3 Mod.	DJL 04/12	IC 1/5/12	GB 31/05/12
C	Dual Water Supply Components Shown, Note 4 Added, Title Block Mod.	DJL 02/09	IC 09/09	PC 9/09
A-B	Refer to Previous Releases	04/01-12/04	05/01-02/05	06/01-03/05
ISSUE	AMENDMENT	DRAWN DATE	CHK'D DATE	APPR'D DATE

DESIGN AUTHORIZED FOR ISSUE B. BALL SIGNATURE ON ORIGINAL DATED 29/6/01	DESIGN	STD DWG GROUP	DATE	April '01
MANAGER ASSET SUPPORT - R.P.E.O: 3 & 5.2	DRAWN	CITY DESIGN	DATE	April '01
DESIGN APPROVED	CHECKED	M. STEER	DATE	May '01
B. HANSEN SIGNATURE ON ORIGINAL DATED 27/6/01	DRAWING FILENAME	UMS 122	ASSOCIATED PLANS	SUPERSEDES WS10-2
PRINCIPAL ASSET OFFICER ROADS & DRAINAGE				



BRISBANE CITY COUNCIL STANDARD DRAWING

PUBLIC UTILITIES SERVICE CONDUIT SECTIONS (3.75m WIDE FOOTPATH)

SCALE: NOT TO SCALE
 DWG No. UMS 124
 ORIGINAL SIZE: A3
 REVISION: D