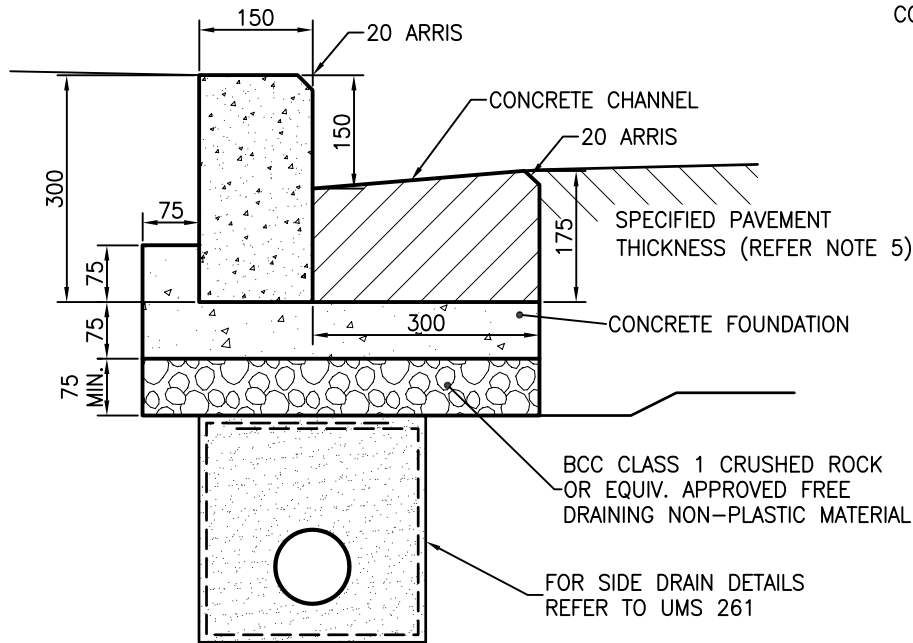
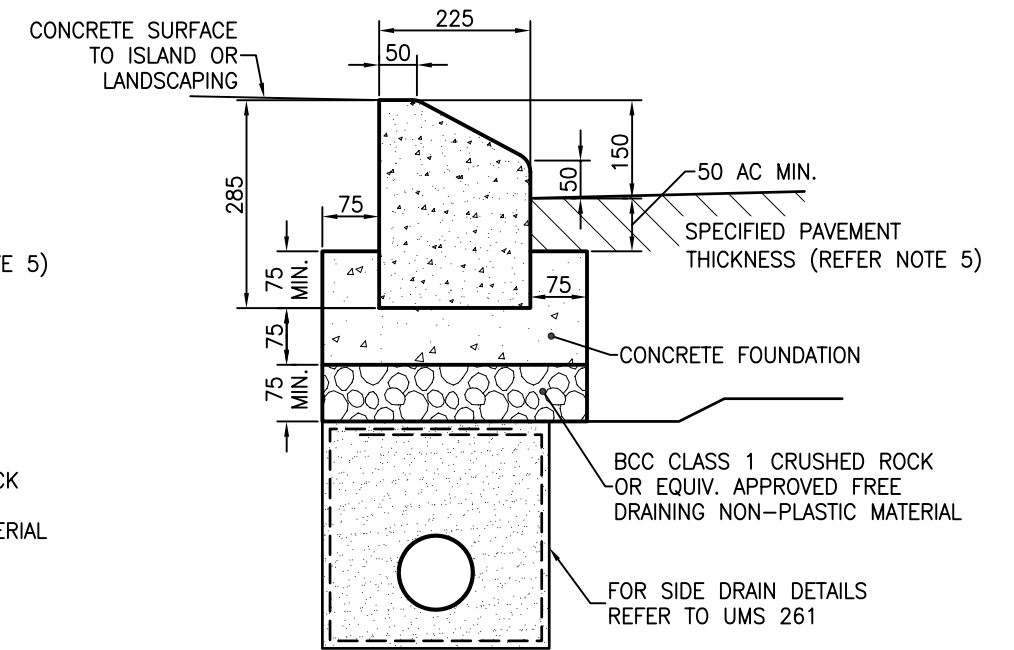


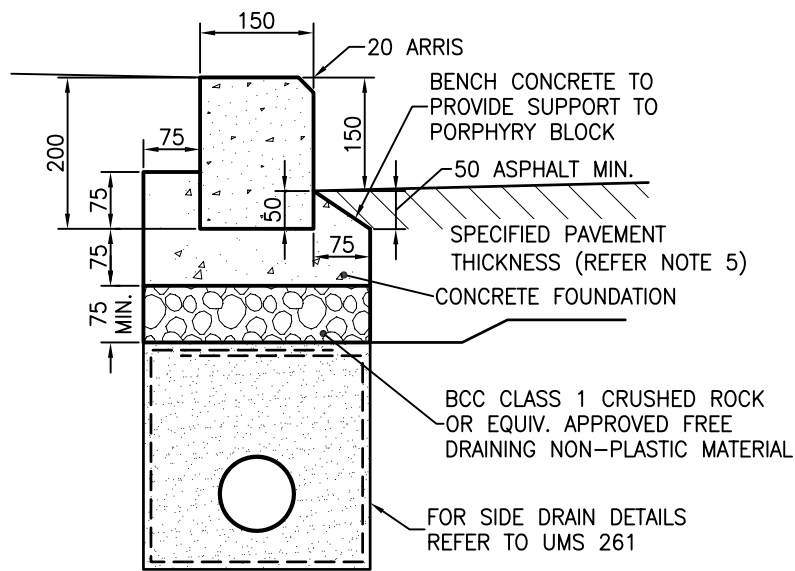
**300 VERTICAL FACE
KERB BLOCK**
(600 x 300 x 150)
Mass = 66 Kg



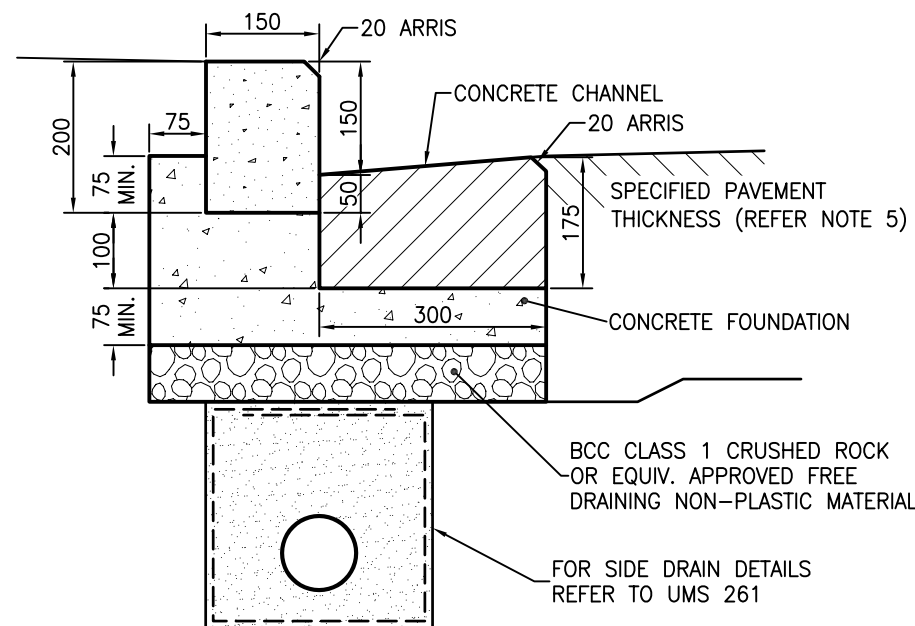
**300 VERTICAL FACE KERB
BLOCK WITH CHANNEL**
(600 x 300 x 150)
Mass = 66 Kg
(DESIGN SUITABLE FOR 300 PORPHYRY BLOCK IF AVAILABLE)



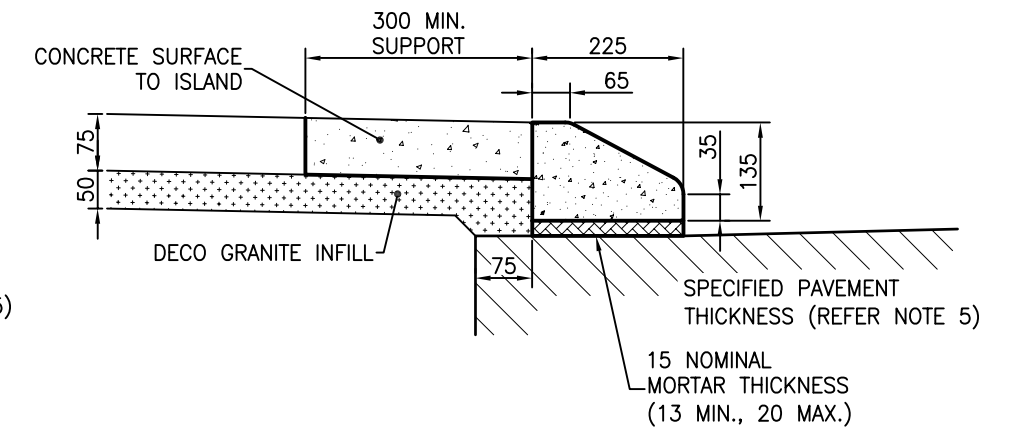
285 MOUNTABLE KERB ONLY
(600 x 285 x 225)
Mass = 73 Kg



**200 REPLICA
PORPHYRY KERB BLOCK**
(500 x 200 x 150)
Mass = 37 Kg



**200 REPLICA PORPHYRY KERB
BLOCK WITH CHANNEL**
(600 x 300 x 150)
Mass = 66 Kg



135 MOUNTABLE KERB ONLY
(600 x 135 x 225)
Mass = 33 Kg

NOTES:

1. PRECAST CONCRETE TO BE GRADE N25.
2. IN-SITU CONCRETE FOUNDATION TO BE GRADE N20.
3. INSITU CONCRETE CHANNEL TO BE GRADE N25.
4. KERB BLOCKS TO BE CUT IN HALF ON SHARP CURVES TO REDUCE CHORD LENGTH.
5. SPECIFIED PAVEMENT THICKNESS TO BE THICKENED IF NECESSARY OVER A 500mm WIDTH TO ADJOIN BASE OF FREE DRAINING LAYER TO ENSURE DRAINAGE OF PAVEMENT.
6. DIMENSIONS IN MILLIMETRES (U.N.O.).

ISSUE	AMENDMENT	DRAWN DATE	CHK'D DATE	APPR'D DATE
B	Replica Porphyry Kerb with Channel Added	DL 07/07	BH 08/07	BH 08/07
A	ORIGINAL ISSUE	April '01	May '01	June '01

DESIGN AUTHORISED FOR ISSUE	DESIGN	STD DWG GROUP	DATE	April '01
B. BALL SIGNATURE ON ORIGINAL DATED 29/6/01	DRAWN	CITY DESIGN	DATE	April '01
MANAGER ASSET SUPPORT - R.P.E.G. 3 8 5 2	CHECKED	M. STEER	DATE	May '01
DESIGN APPROVED	DRAWING FILENAME	/UMS 212.dwg		
B. HANSEN SIGNATURE ON ORIGINAL DATED 27/6/01	ASSOCIATED PLANS	SUPERSEDES WS 11-2		
PRINCIPAL ASSET OFFICER ROADS & DRAINAGE				



BRISBANE CITY COUNCIL - URBAN MANAGEMENT DIVISION

PRECAST KERB BLOCK

SCALE	
NOT TO SCALE	
DWG No. UMS 212	
ORIGINAL SIZE	REVISION
A3	B