

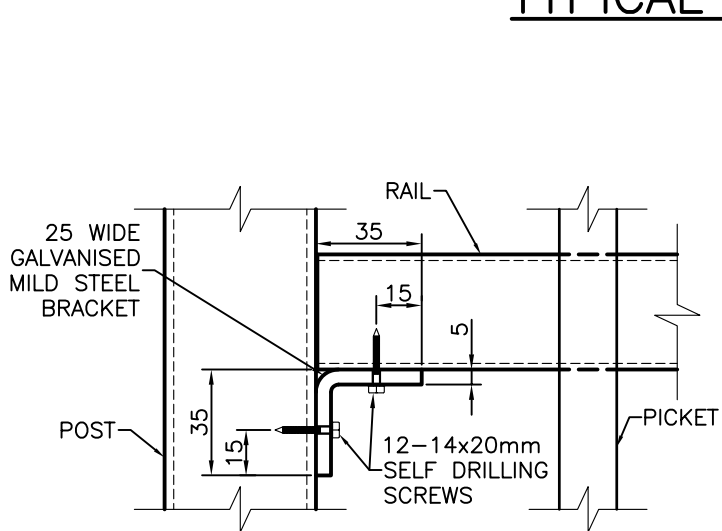
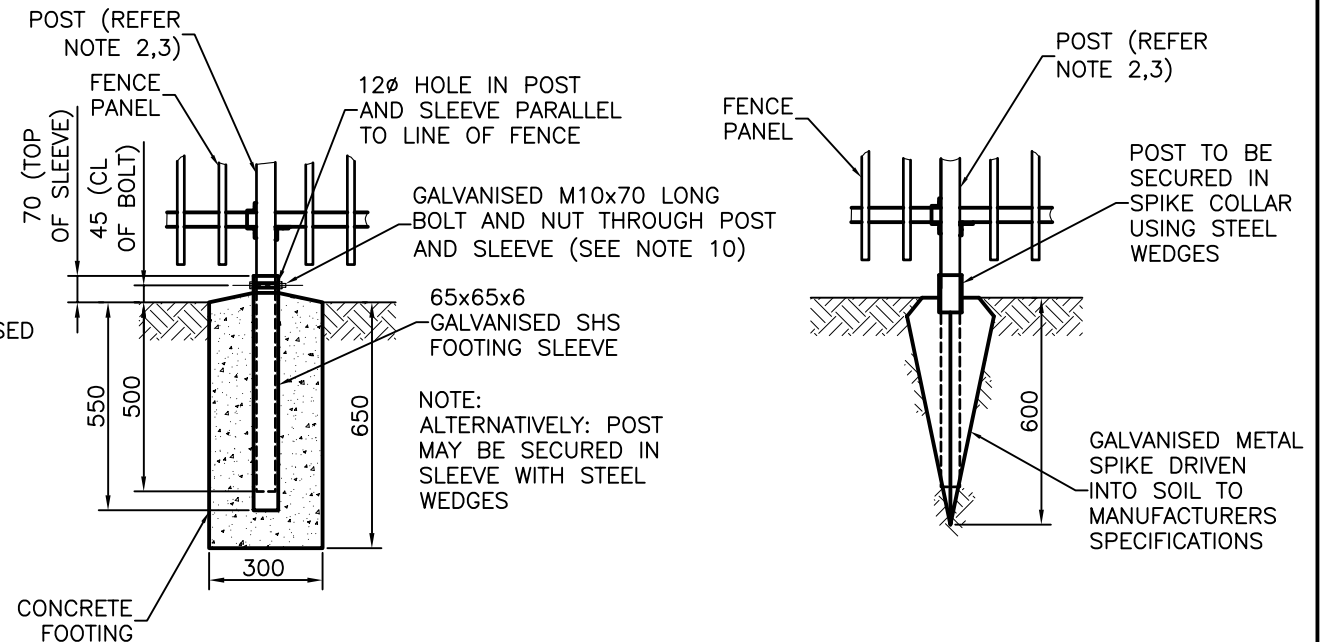
TYPICAL SECTION

NOTE:
 - WHERE EXISTING SOUND CONCRETE SLAB OR FOUNDATION EXISTS, A BASEPLATE DETAIL AS PER UMS 241 MAY BE ADOPTED.
 - WHERE SOLID SUBSTRATE EXISTS, FOOTING SPIKES MAYBE USED AS PER DETAIL B

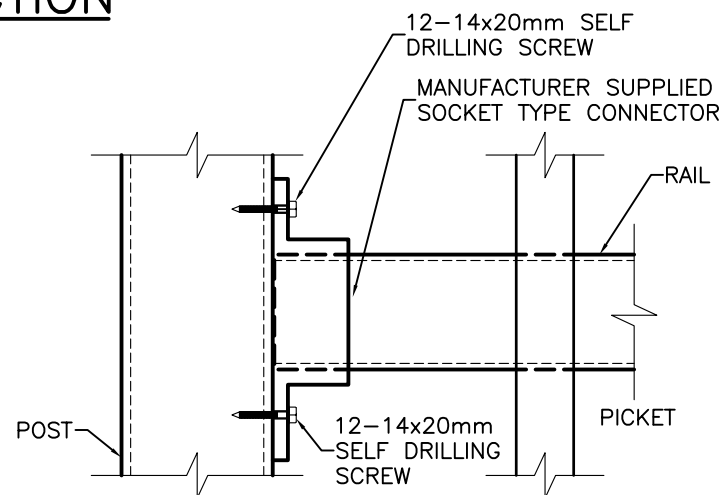
SQUARE OR CIRCULAR FORMWORK TO BE USED AT TOP OF FOOTING. CONCRETE TO SLOPE 25 AWAY FROM POST. EXTEND FORMWORK TO FULL DEPTH IN COLLAPSIBLE SOILS OR WHERE DIRECTED.

DETAIL A
 ALTERNATIVE FOOTING DETAIL
 FOOTING SLEEVE

DETAIL B
 ALTERNATIVE FOOTING DETAIL
 FOOTING SPIKE



DETAIL C
 RAIL TO POST
 CONNECTION - OPTION 1



DETAIL D
 RAIL TO POST
 CONNECTION - OPTION 2

NOTES

- THIS STANDARD IS NOT FOR USE IN A MARINE ENVIRONMENT. THE MARINE ENVIRONMENT COULD EXTEND UP TO 1 km FROM THE FORESHORE.
- GATE, END AND INTERMEDIATE POSTS TO BE 50x50x2 GALVANISED STEEL SECTION TO AS 1163.
- FENCE RAILS TO BE 38x25x1.5 GALVANISED STEEL SECTION TO AS 1163.
- PANELS TO BE FIXED TO POSTS USING MANUFACTURER SUPPLIED SOCKET CONNECTORS OR 25 WIDE 35x35x2 GALVANISED MILD STEEL 'L' BRACKETS. BOTH CONNECTORS TO BE ATTACHED WITH GALVANISED 12-14x20mm HEXAGON HEAD SELF DRILLING (TEK) SCREWS.
- PANELS TO BE 2400x1050 WITH 19 DIAMETER PICKETS, EITHER STRAIGHT TUBULAR OR ROUNDED TOP STYLE.
- HOT DIP GALVANISING: FERROUS OPEN SECTIONS TO AS 4791, FERROUS HOLLOW SECTIONS TO AS 4792.
- ALL CONCRETE TO BE GRADE N25.
- POSTS ARE TO BE VERTICAL.
- SPIKES, WHERE USED, ARE TO BE INSTALLED TO MANUFACTURERS SPECIFICATIONS.
- WHERE SLEEVES OR SPIKES ARE USED, POSTS ARE TO BE SECURED WITH BOLTS AS SHOWN OR STEEL WEDGES.
- NUTS (WHERE USED) TO BE SPOT WELDED TO BOLTS AS AN ANTI-THEFT DETERRENT.
- RAKED PANELS ARE AVAILABLE FOR SLOPES UP TO 1 IN 5.
- THESE FENCES ARE INTENDED AS A PEDESTRIAN BARRIER AND ARE NOT TO BE USED IN SITUATIONS WHERE MOTOR VEHICLES REQUIRE RESTRAINT.
- STEEL WORK TO BE POWDER COATED TO AS 4506 TO MATCH COLOUR CO-ORDINATION IN THE AREA. COLOUR FOR TRAFFIC APPLICATIONS TO BE EITHER BCC CORPORATE COLOUR PALETTE "GREY 3" (AS 2700-1996 "N65 GRAPHITE GREY" EQUIV.), "BLUE 3" (AS 2700S-1996 "B62 MIDNIGHT BLUE" EQUIV.), "GREEN 1" (AS 2700-1996 "G12 HOLLY" EQUIV.) OR BLACK (AS 2700-1996 "N61 BLACK" EQUIV.).
- 100mm WIDE REFLECTIVE TAPE TO BE APPLIED TO END POSTS WHERE VEHICLE TRAFFIC CONFLICT MAY OCCUR.
- DIMENSIONS IN MILLIMETRES (UNO).

ISSUE	AMENDMENT	DRAWN DATE	CHK'D DATE	APPR'D DATE
B	Note 3 Added & Note 14 Modified,	DL 07/07	BH 08/07	BH 08/07
A	ORIGINAL ISSUE	Mar '04	Jun '04	PC 3/9/04

DESIGN AUTHORISED FOR ISSUE PAUL COTTON SIGNATURE ON ORIGINAL DATED 03/09/04	DESIGN	UMD - IM (DL)	DATE	Mar '04
MANAGER INFRASTRUCTURE MANAGEMENT R.P.E.Q. 2546	DRAWN	UMD - IM (DL)	DATE	Mar '04
DESIGN APPROVED BRUCE HANSEN SIGNATURE ON ORIGINAL DATED 03/09/04	CHECKED	UMD - IM	DATE	Jul '04
PRINCIPAL ENGINEER STRATEGIC INFRASTRUCTURE MANAGEMENT	DRAWING FILENAME	UMS 247.dwg		
	ASSOCIATED PLANS			



BRISBANE CITY COUNCIL - URBAN MANAGEMENT DIVISION

PEDESTRIAN SAFETY FENCING

SCALE: NOT TO SCALE
 DWG No. **UMS 247**
 ORIGINAL SIZE: A3 REVISION: B