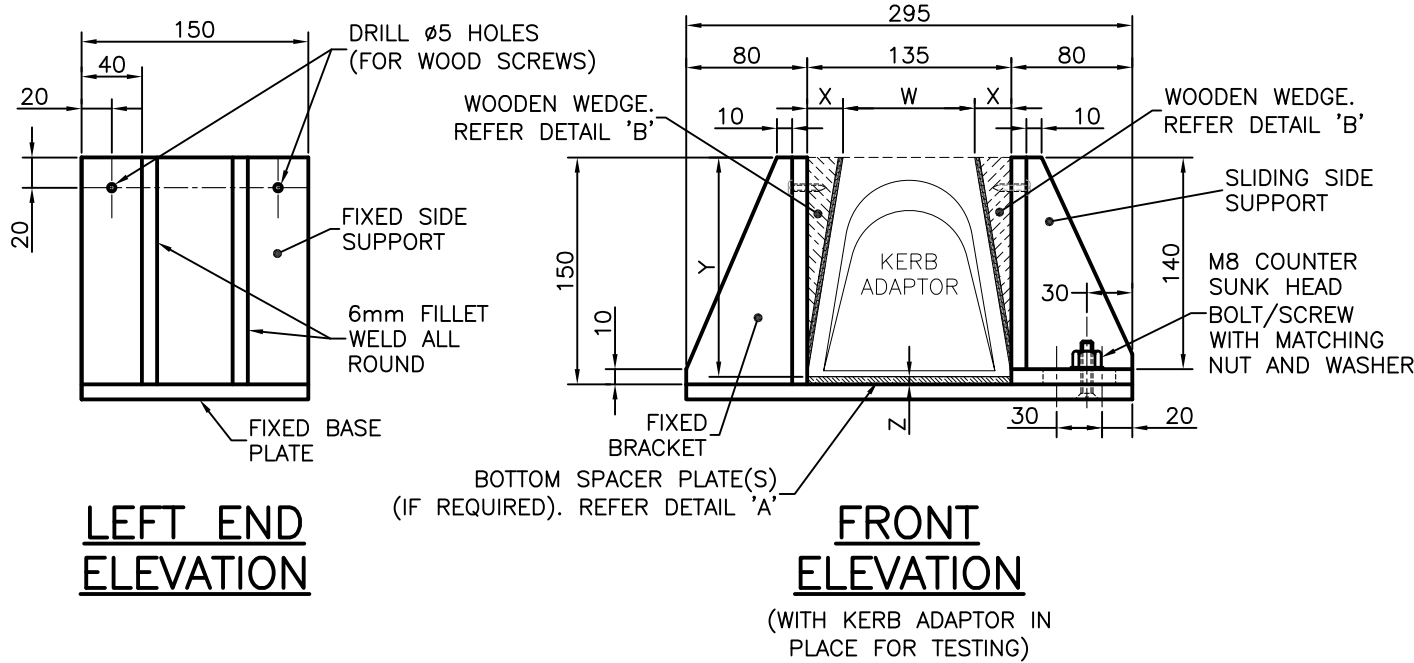
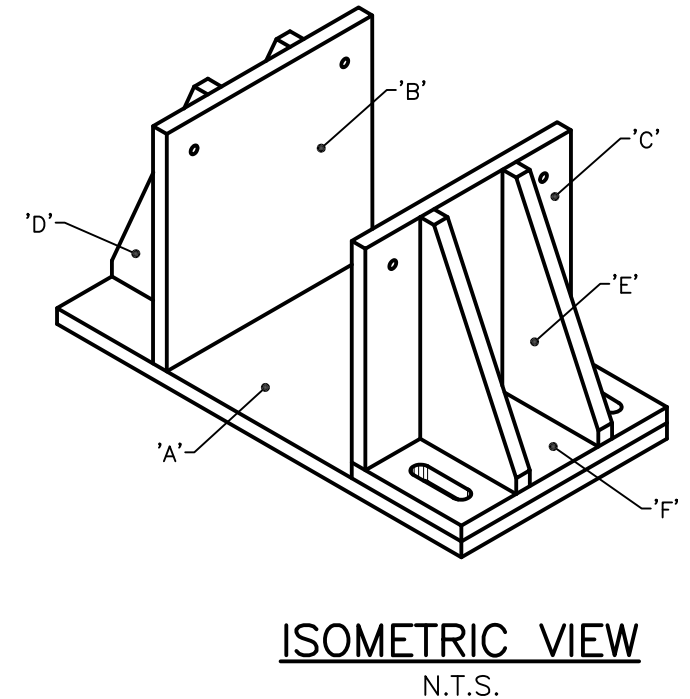
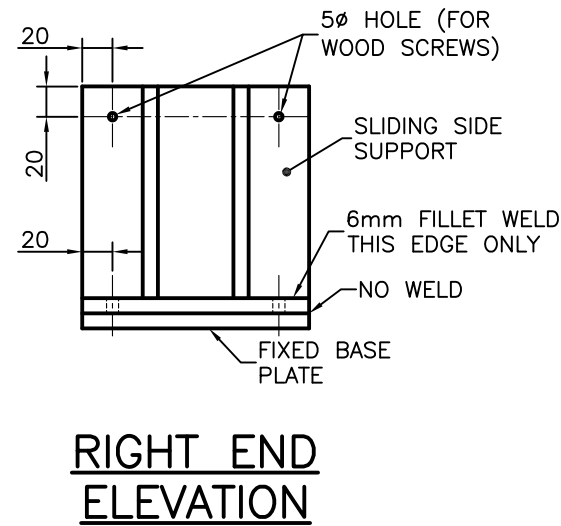
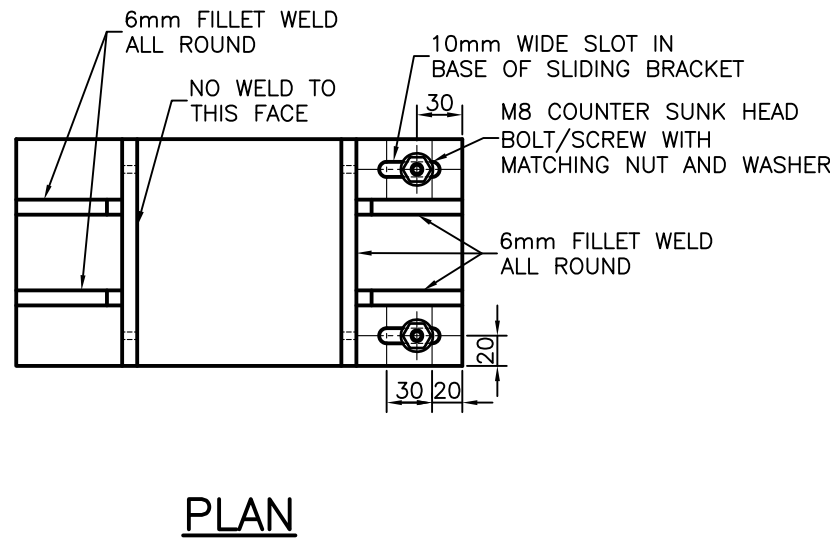
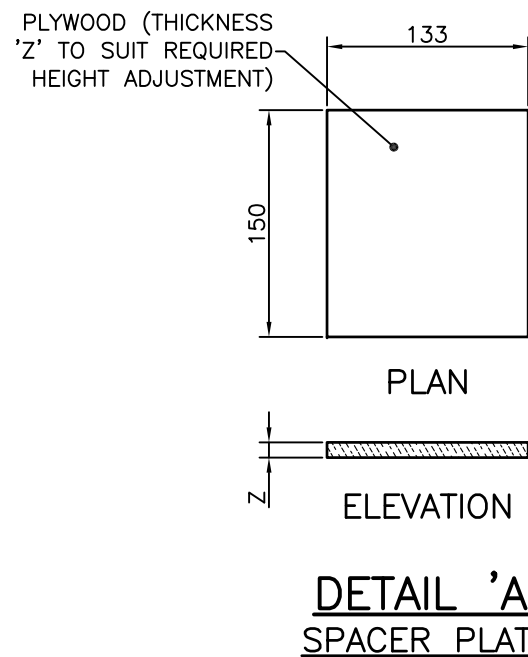


W = TOP WIDTH OF KERB ADAPTOR.  
 X = (135-W)/2  
 Y = HEIGHT OF KERB ADAPTOR  
 Z = HEIGHT OF SPACER PLATE (IF REQUIRED)  
 NOTE: 'Y'+ 'Z'=150



**MATERIAL LIST**

PLATE	SIZE	NUMBER	COMMENT
A	295 x 150	1	FIXED BASE PLATE
B	150 x 150	1	FIXED SUPPORT
C	140 x 150	1	SLIDING SUPPORT
D	70 x 150	2	FIXED SIDE BRACKET
E	70 x 140	2	SLIDING SIDE BRACKET
F	80 x 150	1	BASE - SLIDING



**NOTES:**

1. ALL STEEL PLATE TO BE 10mm THICK MS.
2. ALL WELDS TO BE 6 CFW.
3. SPACER PLATE(S) (IF REQUIRED) TO BE USED UNDER KERB ADAPTORS TO ENSURE THE TOP SURFACE OF ADAPTOR IS FLUSH WITH TOP OF JIG.
4. WOODEN WEDGES WITH RUBBER PAD TO BE CUT AND MODIFIED TO SUIT EACH TYPE OF KERB ADAPTOR TO ENSURE FIRM HOLD AND THAT KERB ADAPTOR IS SUPPORTED ON SIDES.
5. TYPICALLY 10Gx20mm WOOD SCREWS ARE REQUIRED TO SECURE WOODEN WEDGES TO TESTING JIG.
6. REFER TO STANDARD DRAWING UMS 354 FOR STANDARD KERB ADAPTOR DIMENSIONS AND INSTALLATION REQUIREMENTS.
7. REFER TO REFERENCE SPECIFICATION S150-ROADWORKS FOR KERB ADAPTOR REQUIREMENTS AND LOAD TEST METHOD.
8. ALL DIMENSIONS IN MILLIMETRES (U.N.O.).

ISSUE	AMENDMENT	DRAWN DATE	CHK'D DATE	APPR'D DATE
B	Wooden Wedge, Spacer Plate and Notes Reviewed	DL 01/12	IC 5/4/12	GB 31/5/12
A	ORIGINAL ISSUE	May '04	BH 08/07	BH 08/07

DESIGN AUTHORIZED FOR ISSUE		DESIGN	CA (GMcA)	DATE	May '04
P. COTTON SIGNATURE ON ORIGINAL		DRAWN	CA (GMcA)	DATE	May '04
MANAGER CITY ASSETS, R.P.E.Q. 2546		CHECKED	CA (CD/BH)	DATE	May '04
DESIGN APPROVED		DRAWING FILENAME	UMS 355.dwg		
B. HANSEN SIGNATURE ON ORIGINAL DATED 06/08/07		ASSOCIATED PLANS	SUPERSEDES KA2004-01		
PRINCIPAL ENGINEER STRATEGIC ASSET MANAGEMENT					



**BRISBANE CITY COUNCIL STANDARD DRAWING**

**KERB ADAPTOR TESTING JIG FABRICATION DETAILS**

SCALE		1:5	
DWG No.		UMS 355	
ORIGINAL SIZE	A3	REVISION	B