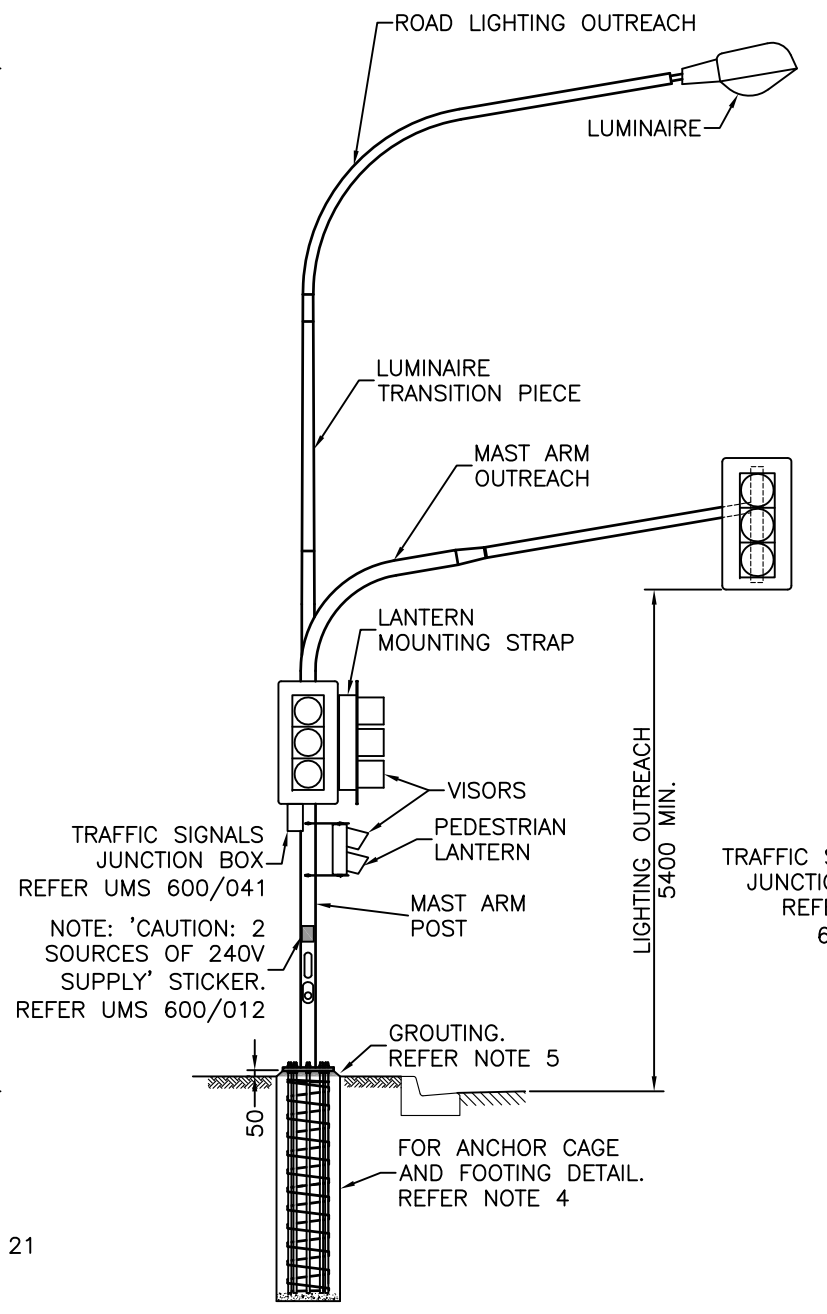
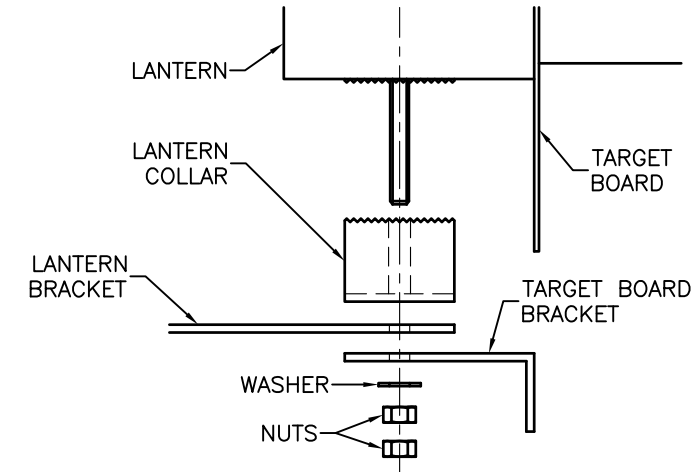


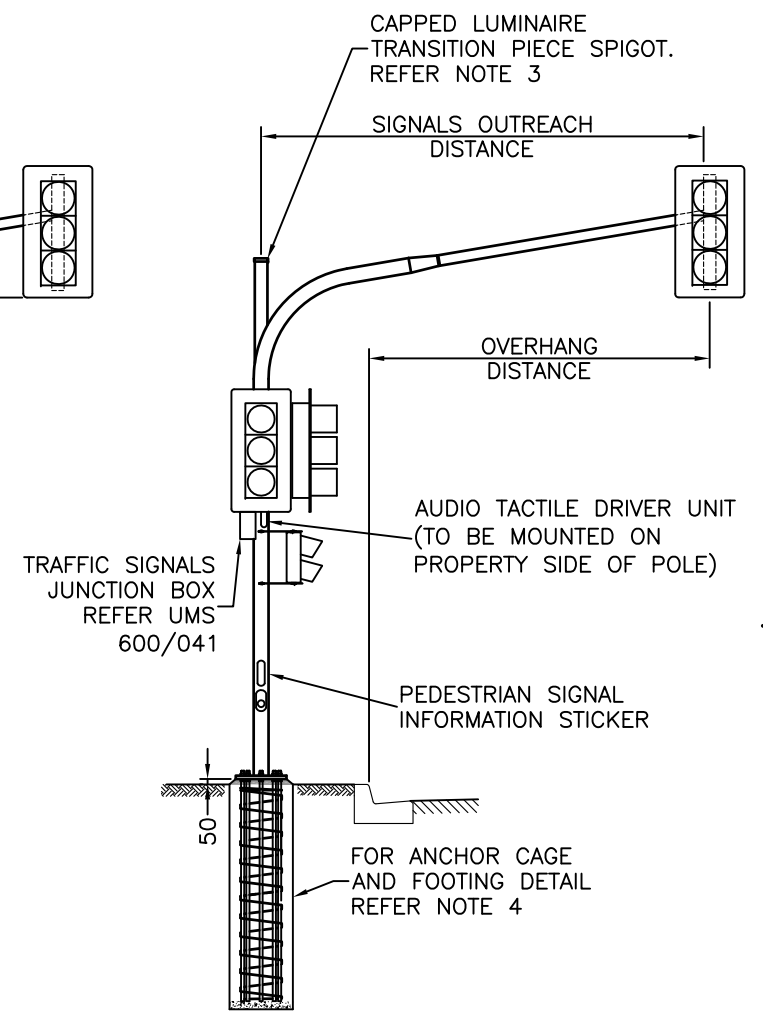
**JOINT USE TRAFFIC SIGNAL & ROAD LIGHT POLE**



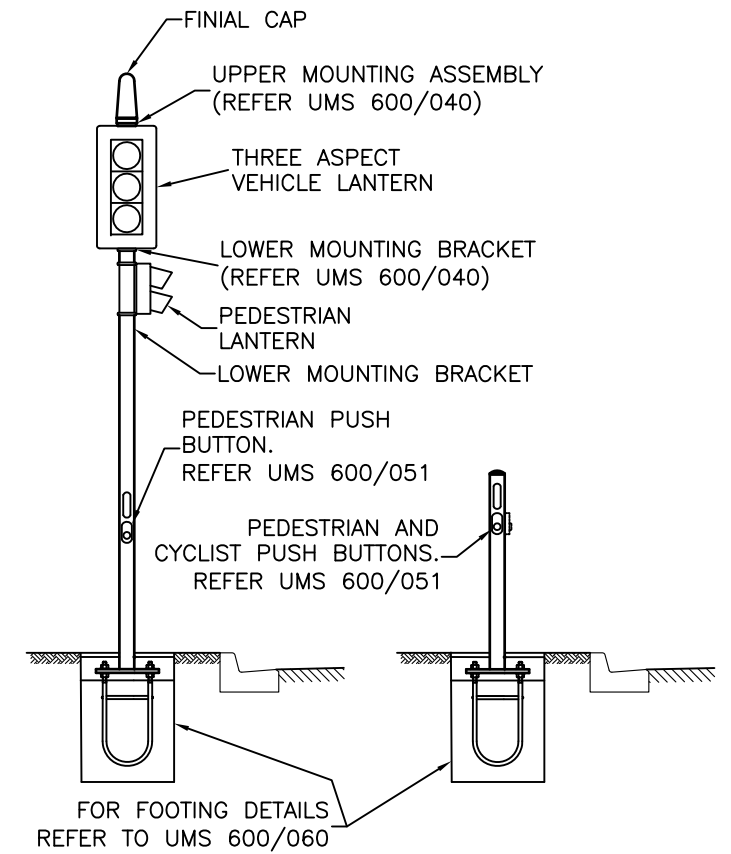
**COMBINED JOINT USE TRAFFIC SIGNAL & ROAD LIGHT MAST ARM (MAINTAINED BY BCC)**



**ATTACHMENT OF LANTERN TO MOUNTING BRACKET**



**TRAFFIC SIGNAL MAST ARMS**



**TRAFFIC SIGNAL POST**

**PUSH BUTTON POST**

**NOTES:**

- SEE AS2339 SECTION 3.2 FIG.3.2 FOR ARRANGEMENT OF FASTENERS USED FOR THE ATTACHMENT OF LANTERN MOUNTING STRAPS TO POST.
- SEE EXPLODED VIEW FOR ATTACHMENT OF LANTERN TO MOUNTING BRACKET. LOCKING MECHANISM NOT TO BE CIRCUMVENTED.
- TRAFFIC SIGNAL MAST ARM POLE MAY BE CONVERTED TO COMBINED JOINT USE TRAFFIC SIGNAL AND ROAD LIGHT MAST ARM BY REMOVING SPIGOT CAP AND INSTALLING LUMINAIRE TRANSITION PIECE AND LIGHTING OUTREACH.
- FOOTINGS REQUIREMENT FOR JOINT USE AND TRAFFIC SIGNAL MAST ARMS:
  - FOR 2.5m & 5.0m MAST ARMS USING DTMR TYPE MAST ARM: USE BCC STD DWG UMS 600/063;
  - FOR 6.0m & 6.5m MAST ARMS: USE MAIN ROADS DWG 1403.
  - FOR 8.5m & 11.0m MAST ARMS: USE BCC STD DWG UMS 600/064;
- MIX SAND/CEMENT IN A 3:1 RATIO BY VOLUME. ADD ENOUGH WATER TO GIVE A WORKABLE MIX. PACK THE MIX BENEATH THE BASE PLATE AND CHAMFER SIDES TO GROUND AT 45°.
- ALL DIMENSIONS IN MILLIMETRES (U.N.O.).

|       |  |               |               |               |
|-------|--|---------------|---------------|---------------|
| D     | Note 4 Add. Footing Req Joint Use & Traffic Signal Mast Arms Amend., Grout Req. Added. | DL 09/11      | IC 24/4/12    | GB 31/5/12    |
| C     | Dwg No. Changed, Overhead Lanterns & Pedestal Footings Altered.                        | Nov '09       | IC 01/11      | PC 01/11      |
| A-B   | Refer Previous Revisions for Detail.   | 04/01 - 11/04 | 05/01 - 02/05 | 06/01 - 02/05 |
| ISSUE | AMENDMENT  | DRAWN DATE    | CHK'D DATE    | APPR'D DATE   |

|   |  |  |  |                  |                          |      |           |
|---|--|--|--|------------------|--------------------------|------|-----------|
| DESIGN AUTHORISED FOR ISSUE<br>B. BALL SIGNATURE ON ORIGINAL<br>DATED 29/6/01 |  |  |  | DESIGN           | STD DWG GROUP            | DATE | April '01 |
| MANAGER ASSET SUPPORT - R.P.E.Q: 3 8 5 2                                      |  |  |  | DRAWN            | CITY DESIGN              | DATE | April '01 |
| DESIGN APPROVED<br>K. MEMORY SIGNATURE ON ORIGINAL<br>DATED 27/6/01           |  |  |  | CHECKED          | R. WILSON                | DATE | May '01   |
| SENIOR PROGRAM OFFICER<br>NETWORK OPERATIONS - R.P.E.Q: 4 7 6 1               |  |  |  | DRAWING FILENAME | UMS 600_050              |      |           |
|   |  |  |  | ASSOCIATED PLANS | Previous Dwg No. UMS 612 |      |           |



**BRISBANE CITY COUNCIL STANDARD DRAWING**

**TRAFFIC SIGNAL POST & POLE INSTALLATION**

SCALE: NOT TO SCALE

DWG No. **UMS 600/050**

ORIGINAL SIZE: A3 REVISION: D