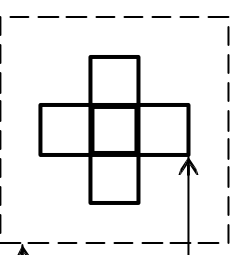


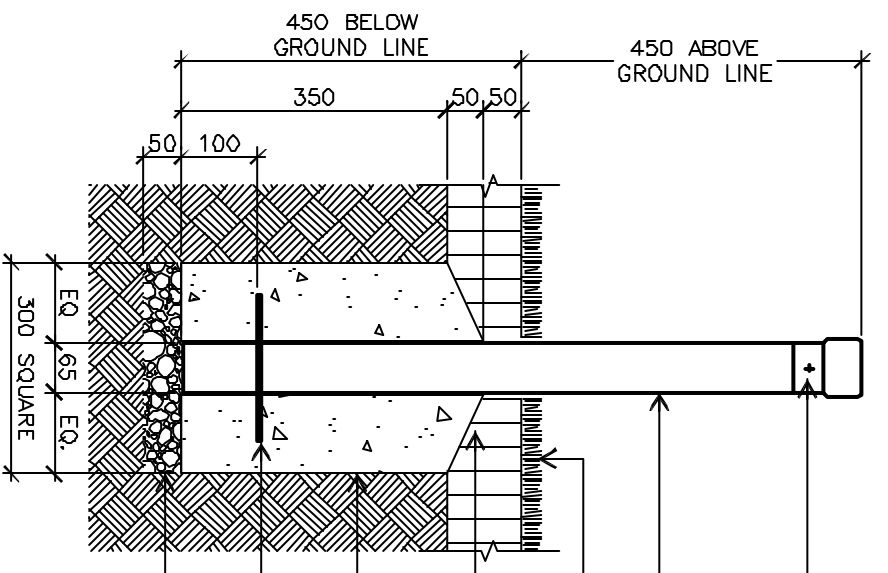
CAST CAP DETAIL - PLAN VIEW
SCALE 1:2

M.S. FOOTING WINGS 65x65x5mm. FILLET WELDED TO SHS - ONE PER SIDE OF POST (4 TOTAL) 100mm FROM BASE OF POST.



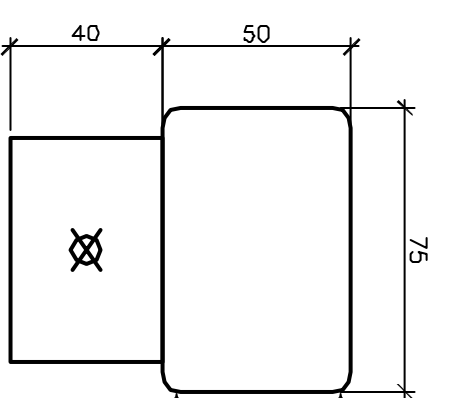
FOOTING - PLAN VIEW
SCALE 1:10

CAST CAP INSERT FIXED TO SHS WITH TAMPER PROOF FIXING. ENSURE FIXING WILL NOT REACT WITH GALVANISED STEEL OR ALUMINIUM CAP AND FINISHES FLUSH.
FOOTING EXTENT (300x300mm).
65x65x900x3mm SHS POST HOT DIPPED GALVANISED.
LANDSCAPE AS SPECIFIED.



BOUNDARY MARKER - SECTION
SCALE 1:10

50mm CLEAN SITE TOPSOIL OVER FOOTING TO ALLOW FOR GRASS COVER. ENSURE SOIL IS FREE OF ROCKS, STICKS ETC.
PACK AUGER HOLE WITH N20 CONCRETE TO WITHIN 50mm OF GROUND SURFACE. MIN. 100mm CONCRETE SURROUNDING POST. ANGLE THE TOP OF THE FOOTING AWAY FROM THE BOLLARD.
M.S. FOOTING WINGS.
50mm DEPTH OF 15-25mm ϕ NOM. GRAVEL FOR DRAINAGE.



CAST CAP DETAIL - ELEVATION VIEW
SCALE 1:2

ALL CORNERS TO BE ROUNDED WITH 5mm RADIUS.
CAST ALUMINIUM TOP CP401 ALUMINIUM ALLOY PROVIDE WRITTEN GUARANTEE THAT ALUMINIUM WILL NOT REACT WITH GALVANISED STEEL AND FIXINGS.

GENERAL NOTES

ENSURE BOUNDARY MARKERS ARE LOCATED AND LANDSCAPED IN ACCORDANCE WITH DETAILED LANDSCAPE PLAN, AND SUBDIVISION AND DEVELOPMENT GUIDELINES.
COLOUR SELECTION IN ACCORDANCE WITH STANDARD BCC CORPORATE COLOUR PALETTE. IF NO COLOUR SPECIFIED, MARKER TO BE INSTALLED AS MANUFACTURED.
REFER UMS 711 FOR SUPPLIER OF MOULD FOR THE CAST CAP - ENSURE CAPPING DETAIL IS AS SHOWN ON THIS DRAWING, INCLUDING CURRENT BCC LOGO. REFER UMS 711 FOR LIST OF MARKER SUPPLIERS.
ALL DIMENSIONS IN MILLIMETRES (U.N.O.).

FIXTURES/FITTINGS/METAL WORK

ALL FIXTURES/FITTINGS UNLESS SPECIFIED ARE TO BE HOT DIPPED GALVANISED.
GRIND SMOOTH EDGES & WELDS PRIOR TO H.D.G. OR APPLIED FINISHES.
ALL WELDS TO BE CONTINUOUS, GROUND OFF SMOOTH & FLUSH.
WHERE POSSIBLE ALL FIXINGS TO BE TAMPER/VANDAL PROOF TO MINIMISE DAMAGE OR THEFT.

LETTERING

LETTERING TO BE ARIAL FONT TO THE SIZES SPECIFIED IN CAST CAP DETAIL. ALL LETTERS TO BE SPACED EVENLY.

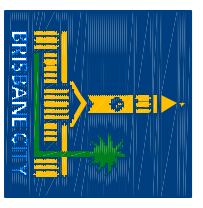
SPECIFICATION

POSITION BOLLARDS @ CORNER OF COUNCIL BOUNDARY, AT CHANGES IN BOUNDARY DIRECTIONS. INCLUDE BOLLARDS BETWEEN CORNERS AND/OR CHANGES IN DIRECTION WHERE THE PARK BOUNDARY IS NOT OBVIOUS. (OR AS OTHERWISE SPECIFIED)
CLEAN CONCRETE SLURRY FROM POST IMMEDIATELY AFTER INSTALLATION.

ISSUE	AMENDMENT	DRAWN DATE	CHK'D DATE	APPR'D DATE
A	ORIGINAL ISSUE	Dec '03	Jul '14	PC 19/04

DESIGN AUTHORISED FOR ISSUE
PAUL COTTION SIGNATURE ON ORIGINAL
DATED 13/07/14
MANAGER INFRASTRUCTURE MANAGEMENT
R.P.E.O. 2516
DESIGN APPROVED
LAREN TEPFLEMAN SIGNATURE ON ORIGINAL
DATED 31/08/14
PRINCIPAL PROGRAM OFFICER PARKS

DESIGN	CITY DESIGN - L.A.	DATE	Dec '03
DRAWN	CITY DESIGN - L.A.	DATE	Dec '03
CHECKED	UMS - E.P. J.T.I and H.P. D.L. & G.P.H.	DATE	Jun '04
DRAWING FILENAME	UMS 723.dwg		
ASSOCIATED PLANS			



BRISBANE CITY COUNCIL - URBAN MANAGEMENT DIVISION

BOLLARD - BOUNDARY MARKER

SCALE 1:10
TITLING UMS 723
ORIGINAL SIZE A3
VERSION A