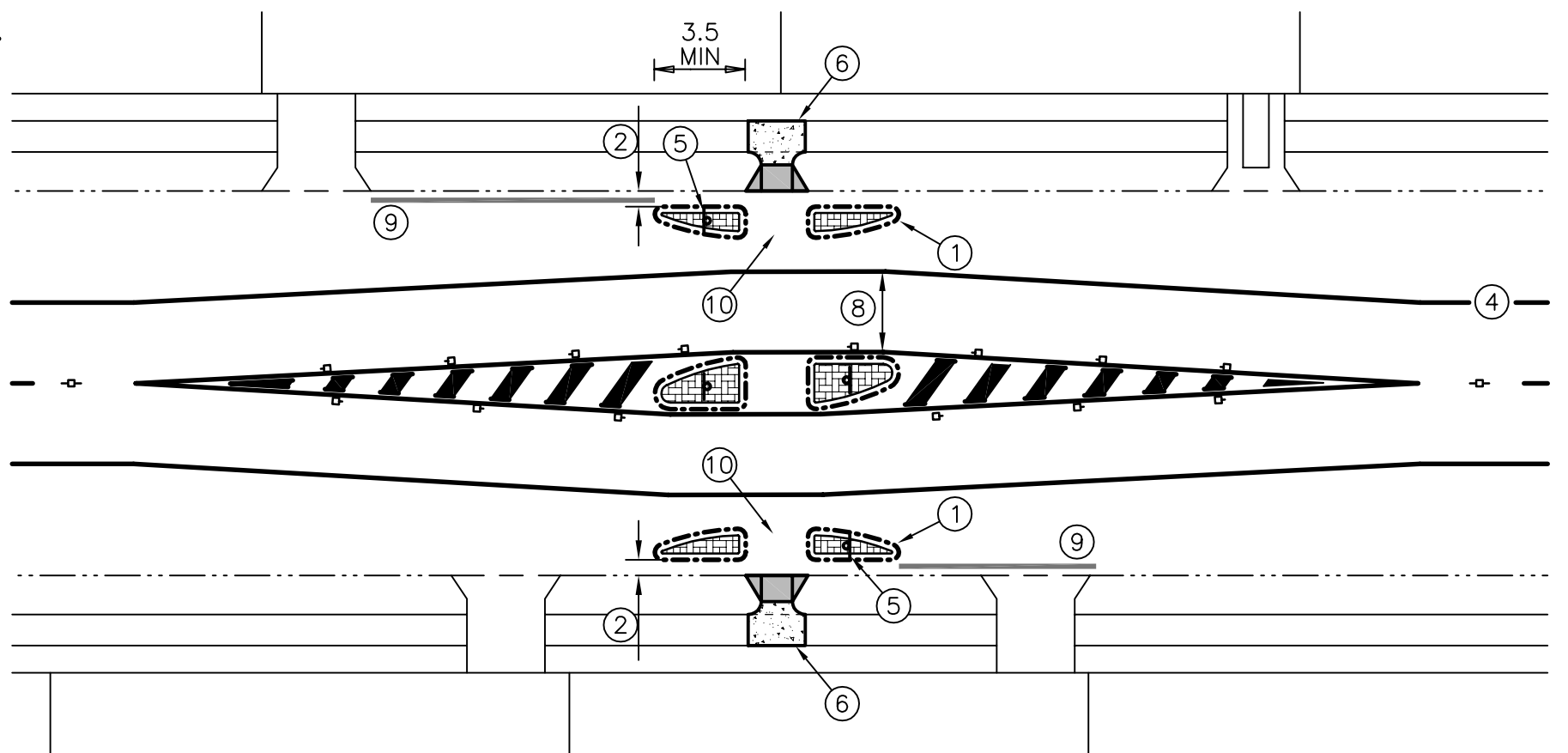


### NOTES

1. PRECAST TRAFFIC ISLANDS AS PER UMS 981 AND UMS 982 TO BE USED WHERE COST AND PRACTICALITY OF DRAINAGE DEVICES IS A CONSIDERATION. ISLAND ON DEPART SIDE OF REFUGE OPTIONAL.
2. LONGITUDINAL DRAINAGE GAP 600mm DESIRABLE (450mm MINIMUM). DESIGNER TO CONSIDER EFFECTS OF LOCALISED ROADWAY FLOODING ON ADJACENT PROPERTIES.
3. STORMWATER DRAINAGE REQUIRED TO NEW LOW POINTS AT BUILDOUTS.
4. EDGE LINES AND BICYCLE AWARENESS PAVEMENT SYMBOLS OPTIONAL OR AS SPECIFIED (REFER UMS 861).
5. DELINEATION REQUIRED TO BUILDOUTS AND ISLANDS BY USE OF DELINEATOR SIGNS AND PAVEMENT MARKING.
6. DIRECTIONAL KERB RAMP AS PER UMS 213 TO BE CONSTRUCTED, WITH CONCRETE FOOTPATH CONNECTION TO EXISTING. A MINIMUM OF 1.2m OF CONCRETE FOOTPATH IS REQUIRED BEHIND BACK OF KERB RAMP.
7. WIDTH FROM REFUGE ISLAND TO KERB - 4.2m DESIRABLE (3.1m MINIMUM).
8. LANE WIDTH PAST REFUGE (TO EDGE LINE) - 3.1m (MINIMUM).
9. NO STOPPING RESTRICTIONS TO BE DELINEATED BY YELLOW 'NO STOPPING' EDGE LINE. EXTENT OF RESTRICTIONS TO BE DETERMINED AS PER 'CROSSING SIGHT DISTANCE' TABLE (REFER UMS 924).
10. YELLOW COLOURED PAVEMENT TREATMENT (NON SLIP) BETWEEN ISLANDS OPTIONAL.
11. THIS PLAN SUPPLEMENTARY TO AND TO BE READ IN CONJUNCTION WITH UMS 921.
12. LANDSCAPING TO BUILDOUT TO BE GROUND COVER ONLY TO MAINTAIN PEDESTRIAN VISIBILITY WITH POTENTIAL GROWING HEIGHT OF 300mm MAXIMUM.
13. FOR DESIGN NOTES, CONSTRUCTION NOTES AND LEGEND REFER TO UMS 901.

### PLAN - INTEGRATED KERB BUILDOUTS



### PLAN - NON-INTEGRATED KERB BUILDOUTS

ISSUE	AMENDMENT	DRAWN DATE	CHK'D DATE	APPR'D DATE
B	DRAINAGE GAP NOTE 2 AMENDED & NOTE 13 ADDED	May '07	May '07	May '07
A	ORIGINAL ISSUE	May '06	June '06	Aug '06

DESIGN AUTHORISED FOR ISSUE				
P COTTON SIGNATURE ON ORIGINAL DATED 06/09/06				
MANAGER CITY ASSETS, R.P.E.Q. 2 5 4 6				
DESIGN APPROVED				
V NASH SIGNATURE ON ORIGINAL				
SENIOR PROGRAM OFFICER - ROAD NETWORK				
DESIGN	STANDARDS WORKING GROUP	DATE	May '06	
DRAWN	CITY DESIGN	DATE	May '06	
CHECKED	D Maher	DATE	June '06	
DRAWING FILENAME	UMS 922			
ASSOCIATED PLANS				



**BRISBANE CITY COUNCIL - CITY POLICY & STRATEGY DIVISION**

ROAD NETWORK GUIDELINES  
PEDESTRIAN REFUGE  
WITH KERB BUILDOUTS

SCALE: NOT TO SCALE  
DWG No: **UMS 922**  
ORIGINAL SIZE: A3 REVISION: B