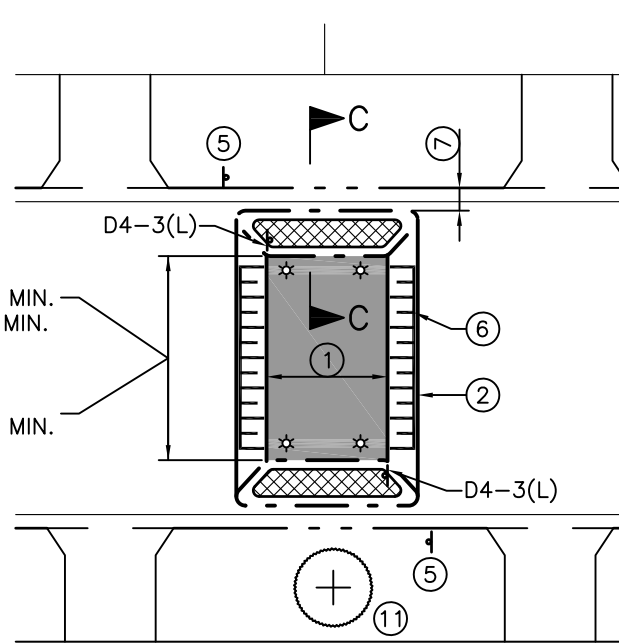


**SPEED PLATFORM**

SCALE 1:250



**SPEED PLATFORM**

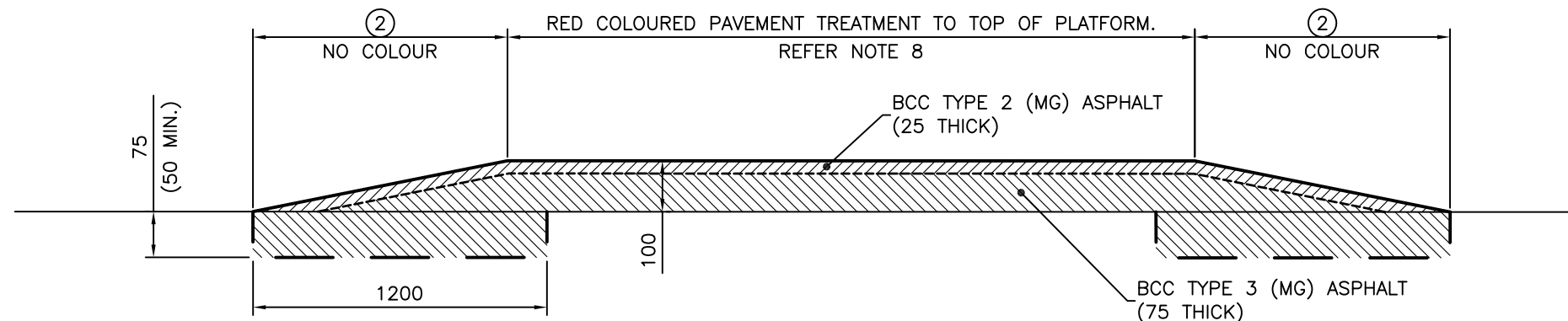
WITH LANDSCAPED ISLANDS  
SCALE 1:250

TWO WAY  
6.0m DESIRABLE MIN.  
5.5m ABSOLUTE MIN.

SINGLE LANE  
3.5m ABSOLUTE MIN.

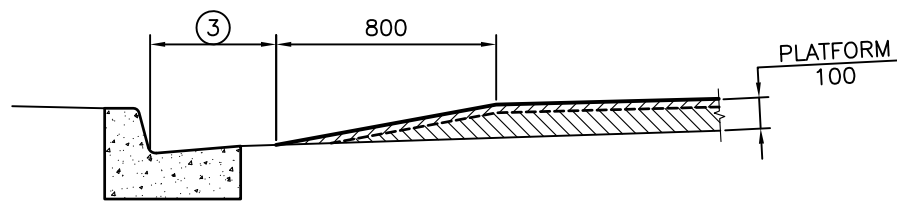
**NOTES:**

1. MINIMUM 4.0m FOR GENERAL TRAFFIC USE (INCLUDING REFUGE VEHICLES). MINIMUM 6.0m FOR BUSES (8.0m FOR ARTICULATED BUSES).
2. RAMP 1 in 10 FOR GENERAL TRAFFIC USE (INCLUDING REFUSE VEHICLES). RAMP 1 in 15 FOR BUSES (INCLUDING ARTICULATED BUSES).
3. LONGITUDINAL DRAINAGE GAP 600mm DESIRABLE (450mm MINIMUM). DESIGNER TO CONSIDER EFFECT OF LOCALISED ROADWAY FLOODING ON ADJACENT PROPERTIES.
4. SIDE RAMP MAXIMUM SLOPE 1 in 8 FOR KERBSIDE PARKING.
5. REFER TO M.U.T.C.D. PART 13, FIGURE 5, NOTES 1 AND 3 FOR RECOMMENDED USE OF WARNING SIGNS.
6. ROAD HUMP MARKINGS AS PER M.U.T.C.D. PART 13, FIGURE 17 AND DETAIL 'A'.
7. LONGITUDINAL DRAINAGE GAP 750mm DESIRABLE (600mm MINIMUM). DESIGNER TO CONSIDER EFFECT OF LOCALISED ROADWAY FLOODING ON ADJACENT PROPERTIES.
8. COLOURED PAVEMENT TREATMENT TO TOP OF PLATFORM (IF SPECIFIED) TO REFERENCE SPECIFICATION FOR CIVIL ENGINEERING WORKS S155 TRAFFIC SIGNS AND PAVEMENT MARKING.
9. 100 DIA. REFLECTIVE ARMOURSTUD SET INTO PLATFORM AS SPECIFIED (OPTIONAL). REFER TO DETAIL 'A' FOR SETOUT.
10. THIS PLAN TO BE READ IN CONJUNCTION WITH M.U.T.C.D. PART 13, FIGURE 5 AND APPENDIX B.
11. STREET TREES, AS SPECIFIED, TO PROVIDE NOISE AND VISUAL BUFFERING WHERE REQUIRED.
12. BACKFILL WITH CONCRETE OR ASPHALT AS DIRECT BY THE SUPERINTENDENT.
13. FOR DESIGN NOTES, CONSTRUCTION NOTES AND LEGEND REFER TO UMS 901.
14. ALL DIMENSIONS IN MILLIMETRES (U.N.O.)



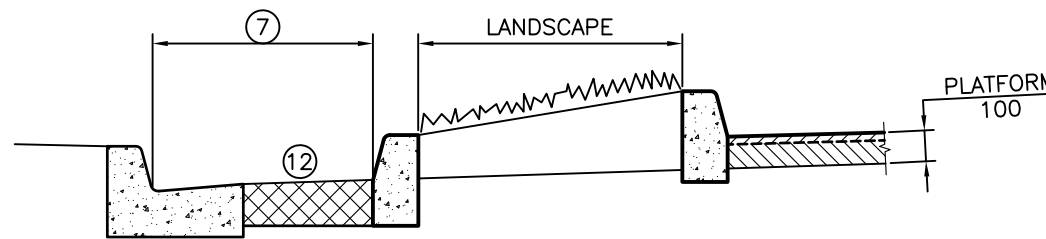
**SECTION A-A**

NOT TO SCALE



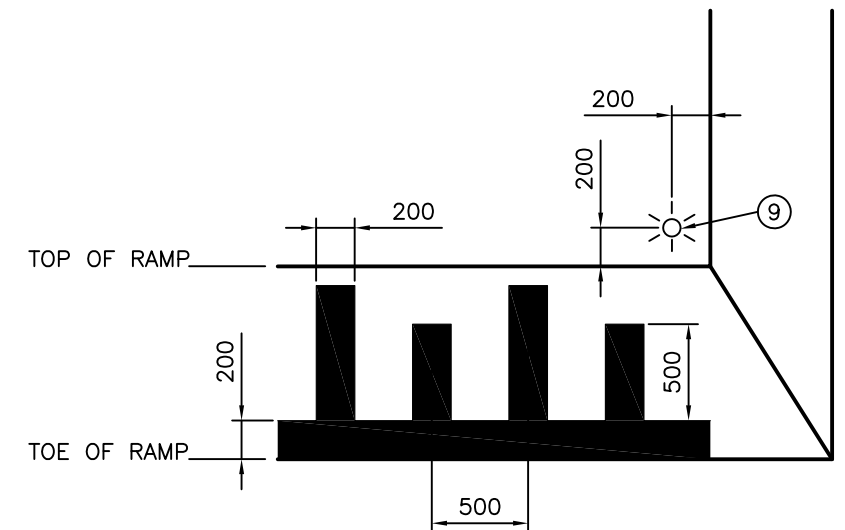
**SECTION B-B**

NOT TO SCALE



**SECTION C-C**

NOT TO SCALE



**DETAIL A**

PAVEMENT MARKINGS TO RAMP

ISSUE	AMENDMENT	DRAWN DATE	CHK'D DATE	APPR'D DATE
D	Note Reference on Section A-A Corrected	DL 01/12	IC 4/4/12	GB 31/5/12
C	Coloured Pave Treat Req (Note 8) Mod, Note 14 Add.	DL 05/10	IC 06/10	PC 06/10
B	DRAINAGE GAP NOTE 3 AMENDED & NOTE 13 ADDED	May '07	May '07	May '07
A	ORIGINAL ISSUE	May '06	June '06	Aug '06

DESIGN	STANDARDS WORKING GROUP	DATE
P COTTON SIGNATURE ON ORIGINAL DATED 06/09/06	CITY DESIGN	May '06
MANAGER CITY ASSETS, R.P.E.O.: 2, 5, 4, 6	D Maher	June '06
DESIGN APPROVED		
V NASH SIGNATURE ON ORIGINAL	Supersedes UA 50-2	
SENIOR PROGRAM OFFICER - ROAD NETWORK	\UMS 942	



**BRISBANE CITY COUNCIL STANDARD DRAWING**

ROAD NETWORK GUIDELINES  
**SPEED PLATFORM  
MID BLOCK**  
GENERAL DESIGN CRITERIA

SCALE: NOT TO SCALE  
DWG No. **UMS 941**  
ORIGINAL SIZE: A3 REVISION: D